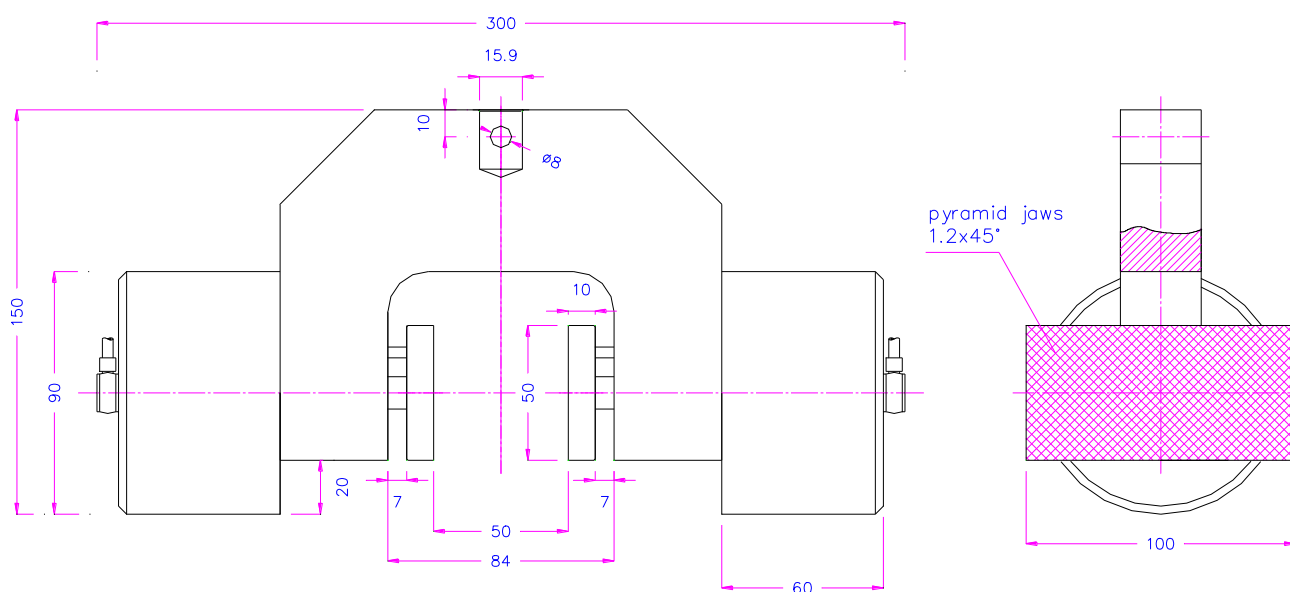
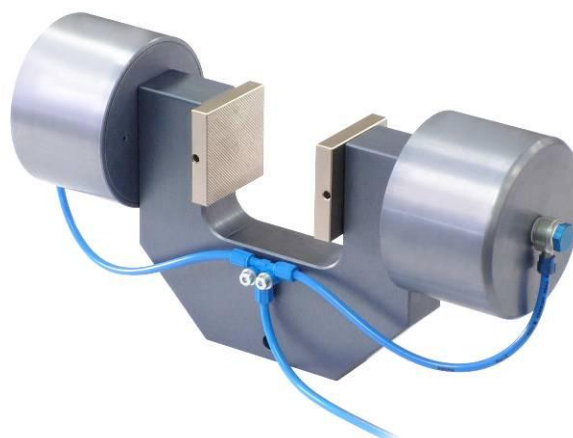


## Pneumatic grip with symmetrical jaw movement

<b>Item no.:</b>	<b>THS22-S60</b>
Load:	Max. 5 kN
Clamping force:	3.5 kN (7 bar) Max. 8 kN (16 bar with TH216)
Temperature range:	0° ... +70°C Further ranges on request
Standard coupling:	Af159 or Af20 Further couplings on request
Body:	Aluminum, anodized
Jaws:	Hardened steel 58HRC
Weight:	2.6 kg per grip without jaws
Scope of delivery:	1 pair of grips without jaws



### Jaws for THS22\* Scope of delivery: 1 set = 4 jaws

Item no.	Surface	Clamping surface HxW	Opening	Weight per pair
THS22-B	Blank (smooth) jaws	50x50 mm	0 - 60 mm	0.38 kg
THS22-BP	Pyramid (serrated) jaws	50x50 mm	0 - 60 mm	0.36 kg
THS22-BV4	V-jaws for round samples	Height 50 mm	4 - 30 mm Ø	0.19 kg
THS22-BG	Rubber-coated jaws	50x50 mm	0 - 60 mm	0.39 kg
THS22-BW	Wave jaws	50x50 mm	0 - 60 mm	0.34 kg
THS22-BD	Diamond-coated jaws	50x50 mm	0 - 60 mm	0.38 kg
THS22-B100	Blank (smooth) jaws	50x100 mm	0 - 60 mm	0.76 kg
THS22-BP100	Pyramid (serrated) jaws	50x100 mm	0 - 60 mm	0.72 kg
THS22-BG100	Rubber-coated jaws	50x100 mm	0 - 60 mm	0.78 kg
THS22-BW100	Wave jaws	50x100 mm	0 - 60 mm	0.70 kg
THS22-BD100	Diamond-coated jaws	50x100 mm	0 - 60 mm	0.76 kg

### Insert jaws for THS22\*

Jaw quick-change system. Insert jaws require a carrier (THS22-GT). Scope of delivery: 1 set = 4 jaws

Item no.	Surface	Clamping surface HxW	Opening	Weight per pair
THS22-GT	Carrier	-	-	0.32 kg
THS22-EB	Blank insert jaws	50x50 mm	0 - 46 mm	0.32 kg
THS22-EBV4	V-insert jaws for round samples	Height 50 mm	0 - 16 mm	0.15 kg
THS22-EBP	Pyramid (serrated) insert jaws	50x50 mm	0 - 46 mm	0.29 kg
THS22-EBG	Rubber-coated insert jaws	50x50 mm	0 - 44 mm	0.33 kg
THS22-EBW	Wave insert jaws	50x50 mm	0 - 46 mm	0.30 kg
THS22-EBD	Diamond-coated insert jaws	50x50 mm	0 - 46 mm	0.32 kg

\*Jaws with other surface coatings and openings are possible on request

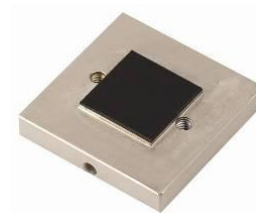
Examples for customized solutions:



**THS22-S60-A90**  
Reduced height 90 mm



**THS22-B50x80-S3**  
Needle jaws for foam, Rockwool



**THS22-BG25.4x25.4**  
Jaws 50x50 mm with elevated rubber-coated clamping surface  
25.4 x 25.4 mm



**THS22-BP60**  
Pyramid jaws 60x60 mm



**THS22-BP0.8x45**  
Pyramid jaws 50x50 mm with 0.8x45 pyramids

**Pneumatic accessories:****TH205-1 Foot pedals**

None locking: The jaws of the grip open by pressing the foot pedal and close after removing the foot from the pedal.

Scope of delivery: 1 pair of foot switches including tubes and fittings

**TH205-2 Foot pedals**

With locking function: The jaws of the grip open by pressing the foot pedal and remain opened after removing the foot from the pedal. The jaws close by pressing the pedal one more time.

Scope of delivery: 1 pair of foot switches including tubes and fittings

**TH205-PR16bar Pressure regulator**

Optional for TH205-1 or TH205-2

To adjust air pressure: 1-16 bar

**TH205-3 Hand switches**

With locking function: The jaws of the grip close by pulling the handle and remain closed. The jaws open by pushing the handle back.

Scope of delivery: 1 unit of hand switches including tubes and fittings

**TH205-4-M5 Hand switches for THS22**

Pneumatic micro – hand switches, tubes and fittings, M5 connection

The hand switches are directly mounted at the grips. 3/2 directional valve

Scope of supply: 2 hand switches including tubes and fittings

**TH216 Silent compressor for laboratories, oil-lubricated, with pressure reducer**

Max pressure 16 bar; 230 V/50 HZ; noise level: 38 dB(A)

Motor: 0.13 kW; displacement: 17 l/min; tank size 3.5 l

Dimensions: 340x290x340 mm (L x W x H); weight 18 kg