

## FATIGUE GRIPS

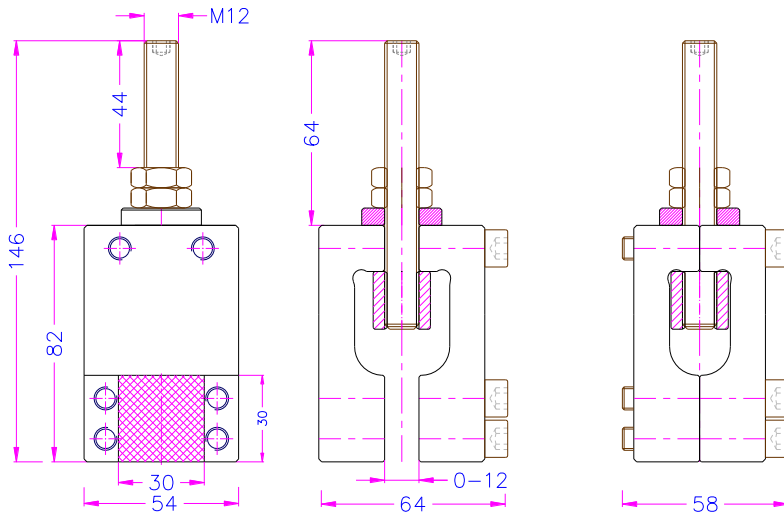
Light-weight fatigue grips with high clamping force.  
 Applicable for steel, aluminium, composite materials, such as fibreglass,  
 carbon-fibre-reinforced polymer (CFRP), etc. also in temperature chambers.

Backlash-free adjustment.  
 Serrated jaws for flat samples and v-jaws for round samples

<b>Item no.:</b>	<b>THS28-30-BP30-S12-F30-AM12</b>
Max. load:	30 kN
Specimen thickness:	0-12 mm
Clamping surface:	30 x 30 mm Serration 1.2x45°
Coupling:	M12x1.75 threaded stud
Body and jaws:	Steel, hardened, nickel-coated
Temperature range:	-40 ... +280°C
Weight:	1.54 kg each grip

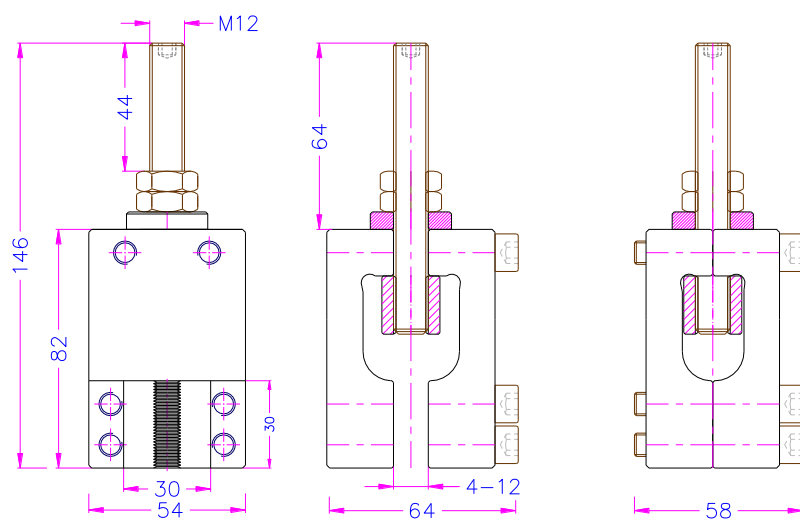


According to **ASTM F2118**: Constant Amplitude of Force  
 Controlled Fatigue Testing of Acrylic Bone Cement Materials



**Item no.: THS28-30-BV12-S12-F30-AM12**

Max. load:	30 kN
Specimen diameter:	4-12 mm
Clamping surface:	V-jaws with tooth pitch 1 mm x 30 mm
Coupling:	M12 threaded stud
Body and jaws:	Steel, nickel-coated, hardened
Temperature range:	-40 ... +280°C
Weight:	1.5 kg each grip
Scope of supply:	1 pair of grips









**THS28-60-BP110-S21-AM28x1.5-T600°C**

9 kg

TiNi-coated

Max. temperature +600°C

## Legend

### THS28-A-B-C-D-E

**A** = Jaw height

**B** = Jaw form and size

Px = pyramid (serrated) surface for flat samples x = max. width

Vx = v-jaws for round samples x = max. sample diameter

**C** = Sx x = opening size

**D** = Fx x = force, kN

**E** = Ax adapter form and size, e.g. AM12 = Adapter male with M12 thread



**THS28-5-BD-R2-S8-Af159**

Special version for round samples

Max. sample size 4 mm Ø

Diamond-coated jaws, 8 mm thick

Max. load 5 kN

Coupling Af159