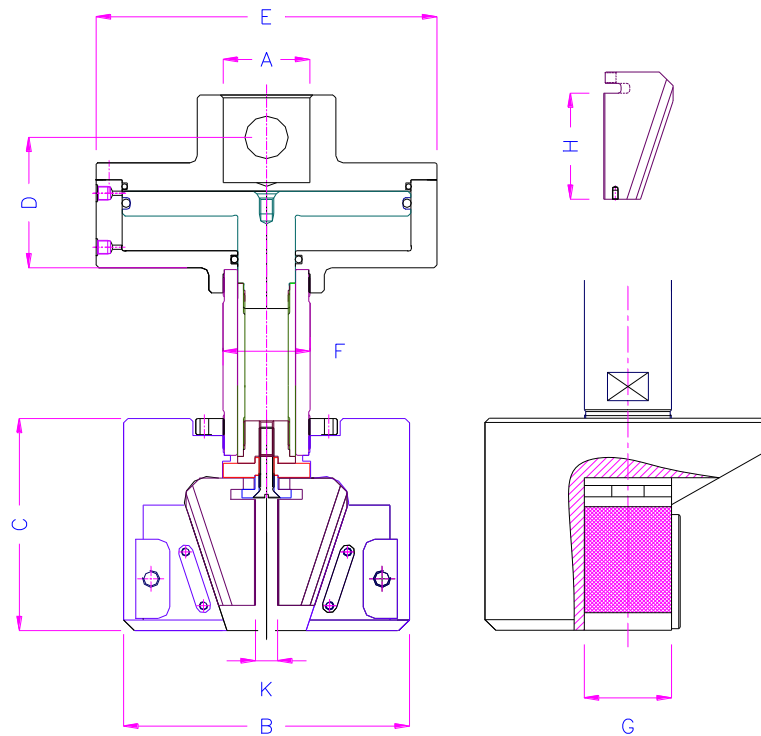


# THS321

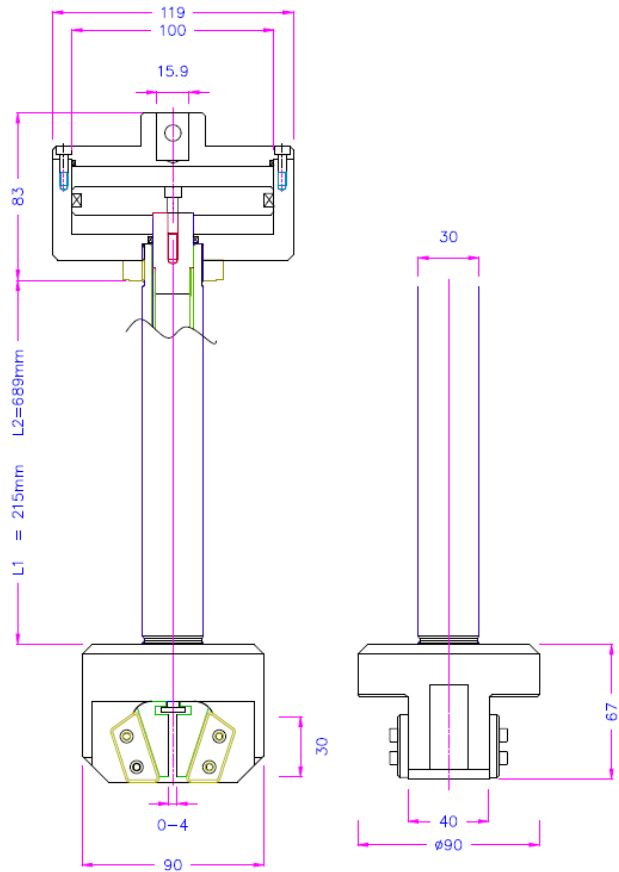
Wedge grips for higher temperature ranges  
 -70°C (-180°) up to 350°C (500°C, 700°C)

Wedges move forward and create an axial load. When 2. grip is closing, we propose to move machine back to load 0



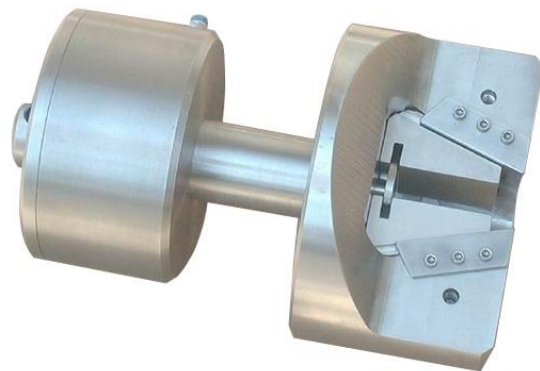
	kN	A	B	C	D	E	F	G	H	K	Hydraulic. Pneumatic	weight 1 head
	kN	mm	mm	mm	mm	mm	mm	mm	mm	mm		kg
THS321-10-Pn	10	15.9	90	78	63	120	30	40	30	0-7	Pn	
THS321-20-Pn	20	15.9	150	100	81	158	40	50	50	0-14	Pn	
THS321-50-Pn	50	31.8	198	120	101	236	54	60	67	0-14	Pn	
THS321-100-Pn	100	40	198	150	92	236	60	60	75	0-15	Pn	50
THS321-100-Hy	100	40	198	150	92	236	60	60	75	0-15	Hy	50
THS321-250-Hy	250	60	296	225	170	198	90	80	110	0-19	Hy	120

**THS321-10 T425°**  
10kN pneumatic



**THS321-50-Pn**

50kN  
Keeping force with 7 bar : 21kN  
( maxi 16 bar THS216 )



**THS321-100-Pn**

**dto**

Rod dia 200mm

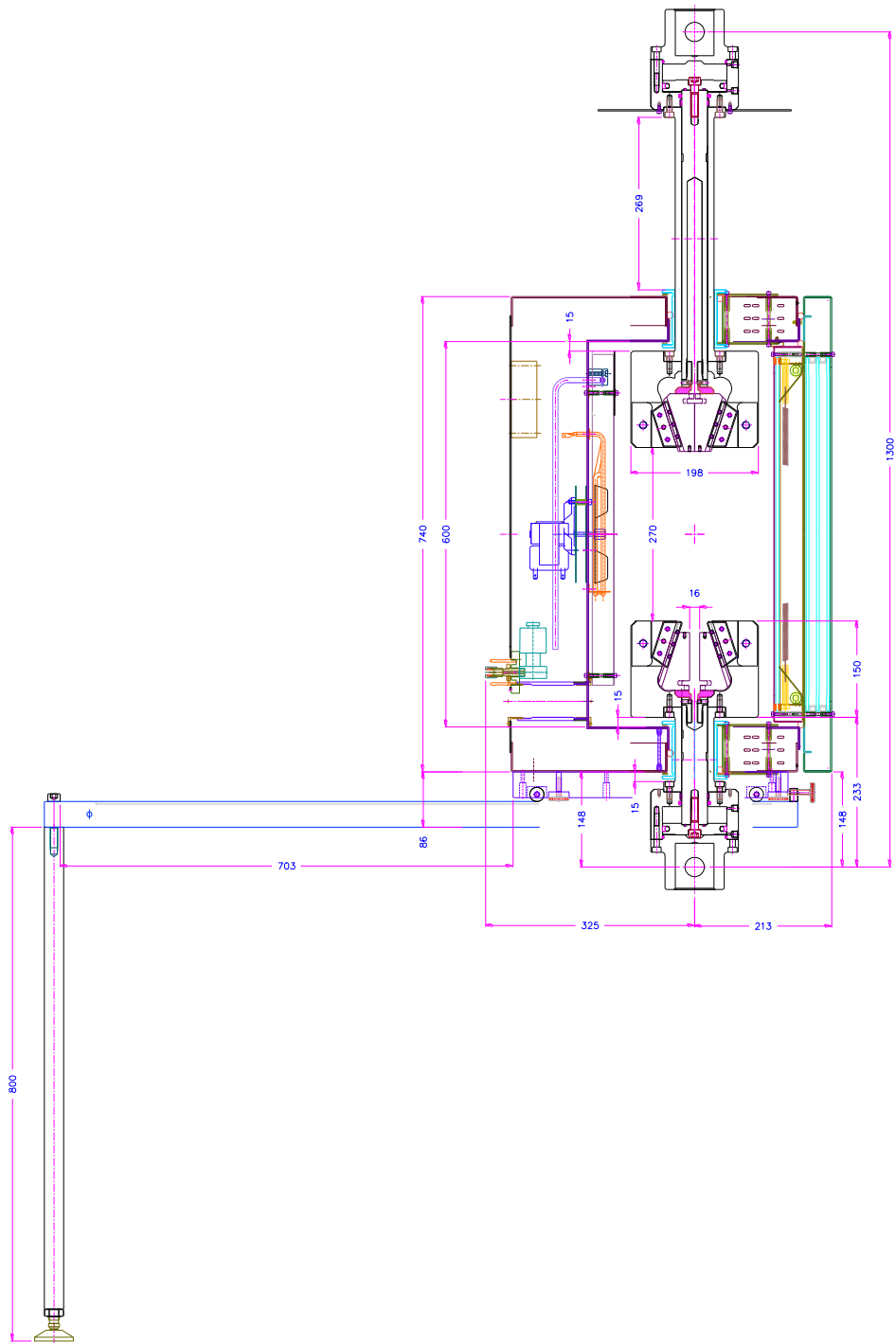
Prekeeping force 30kN with 7 bar ( 64kN with 15 bar )





THS321-100-Hy 100kN keeping force 200kN

TH2700+EK + THS321-100 Chamber + Grip -180°C .. 350°C



TH2700+EK THS321-100-Hy

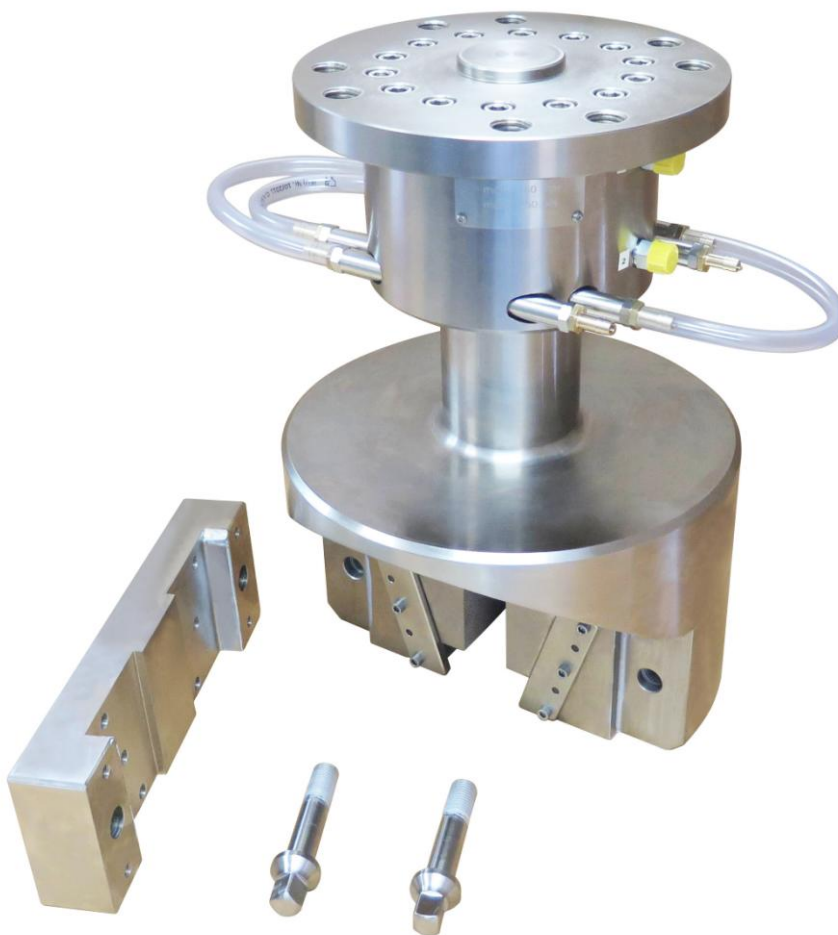
THS321-

**THS321-250-Hy**

Hydraulischer Spannkopf 250kN

**THS321-250-Hy**

Hydraulic wedge grip  
For chamber usage  
-180°C up to 350°C  
250kN clamping force



Pneumatic accessories:



**TH205-1 Foot pedals**

None locking: The jaws of the grip open by pressing the foot pedal and close after removing the foot from the pedal.

Scope of delivery: 1 pair of foot switches including tubes and fittings



**TH216 Silent compressor for laboratories, oil-lubricated, with pressure reducer**

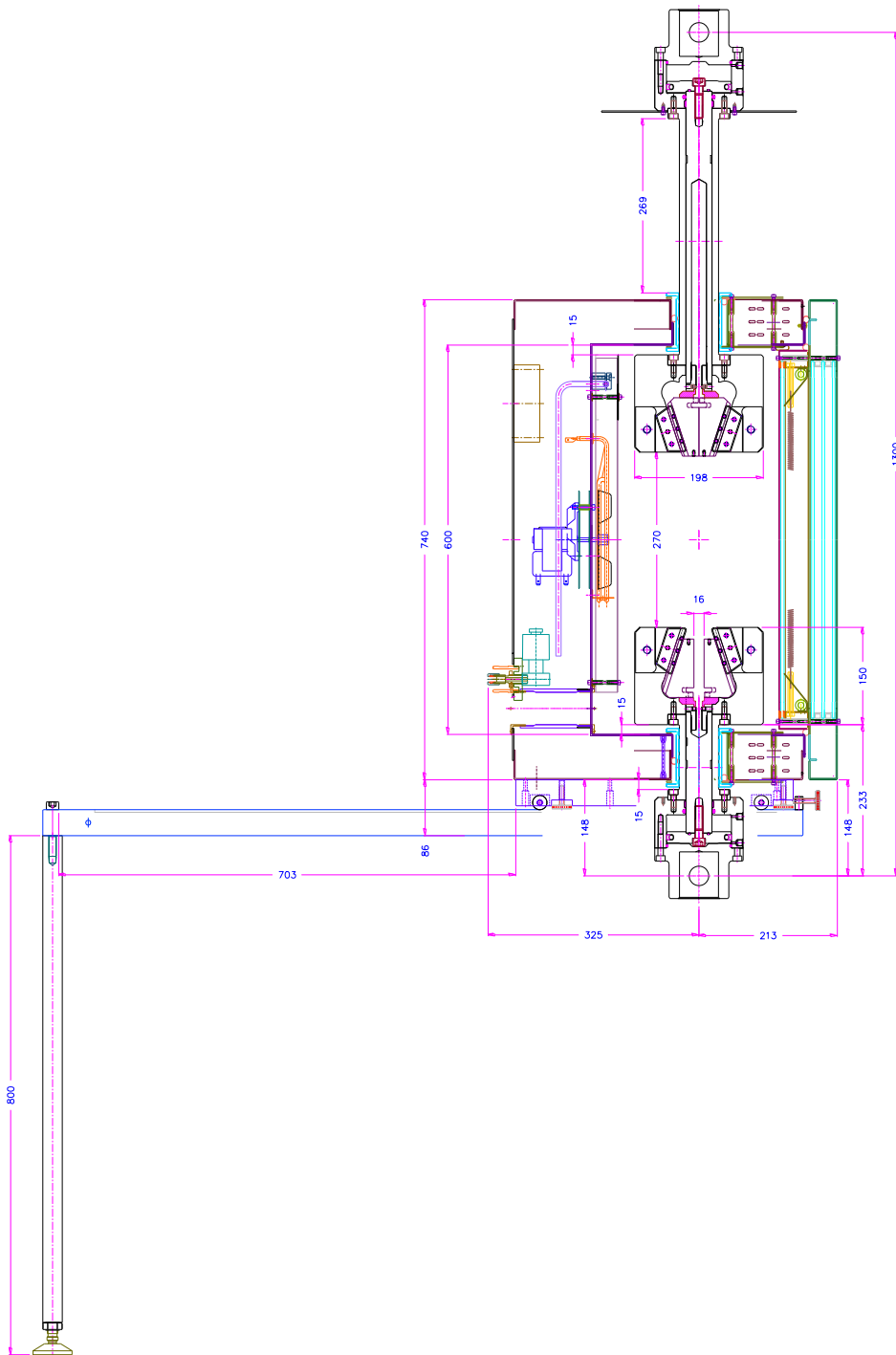
Max pressure 16 bar; 230 V/50 Hz; noise level: 38 dB(A)

Motor: 0.13 kW; displacement: 17 l/min; tank size 3.5 l

Dimensions: 340x290x340 mm (L x W x H); weight 18 kg

 A grey, rectangular hydraulic pump unit with a control panel on the front. The panel includes two green indicator lights, a pressure gauge, a pressure-reducing knob, and a red emergency stop button.	<p>THS321-P</p> <p>Hydraulic pump air driven</p> <p>0-350 bar 220 Volt 1 A 0-10 Volt input -&gt; 0-400 bar output</p>  The same hydraulic pump unit with its front door open, revealing the internal hydraulic pump mechanism and various hoses and fittings.
---	--

TH2700+EK + THS321-100 Chamber with removable wedge ports + hydraulic grip



TH2700+EK THS321-100-Hy