

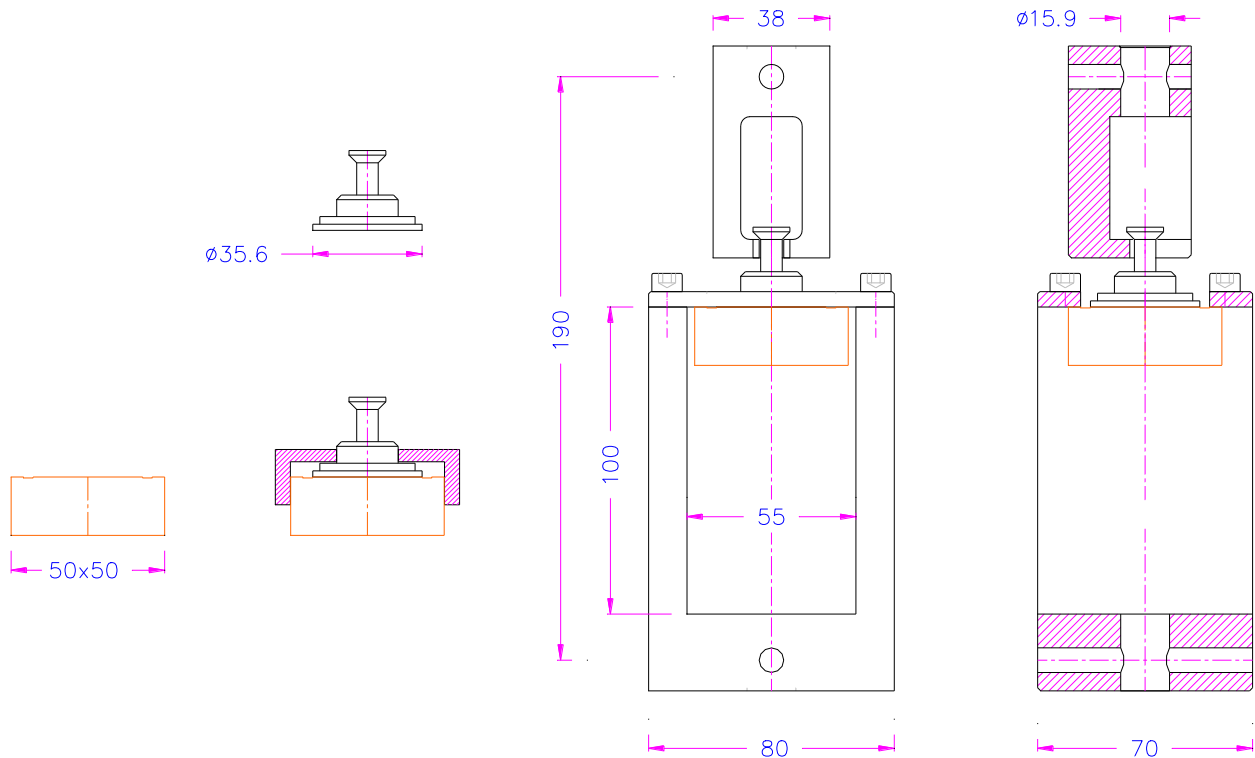
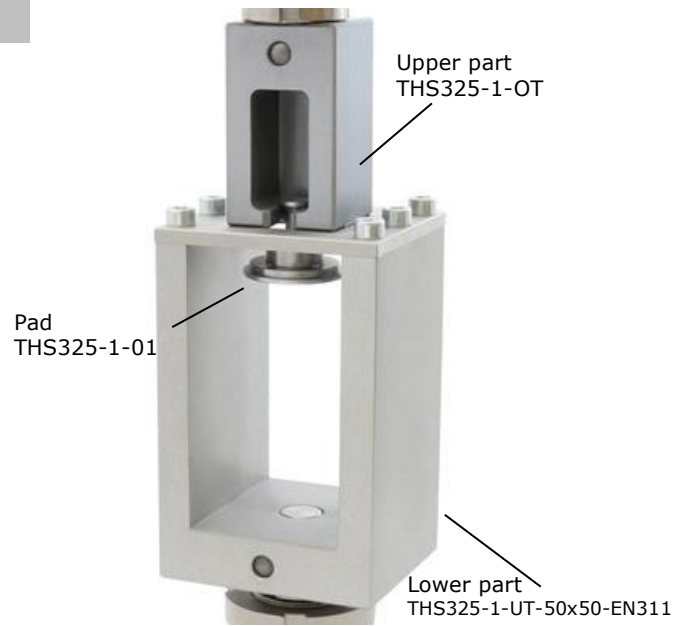
## Fixtures for wooden samples

**Item no.:** THS325-1-50x50-EN311

### Fixture to test surface soundness of wood-based panels

- Standard: According to DIN EN311
- Max. load: 5 kN
- Coupling: Af159, Af20  
Further couplings on request
- Material: Upper part: anodized aluminium  
Lower part: anodized aluminium  
Pad: stainless steel
- Temperature range: -70°C ... +180°C  
Further temperature ranges on request
- Weight: 2.3 kg (fixture excl. adapter)
- Scope of supply: THS325-1 fixture consisting of:  
- 1x upper part  
- 1x lower part  
- 1x pad

- Available against a surcharge:
- Universal joint adapter/ cardan adapter (see THS327)
  - 1 additional pad (THS325-1-01)
  - Package of 10 additional pads (THS325-1-01-Pkg10)
  - Lower part THS325-1-UT-50x50-EN311

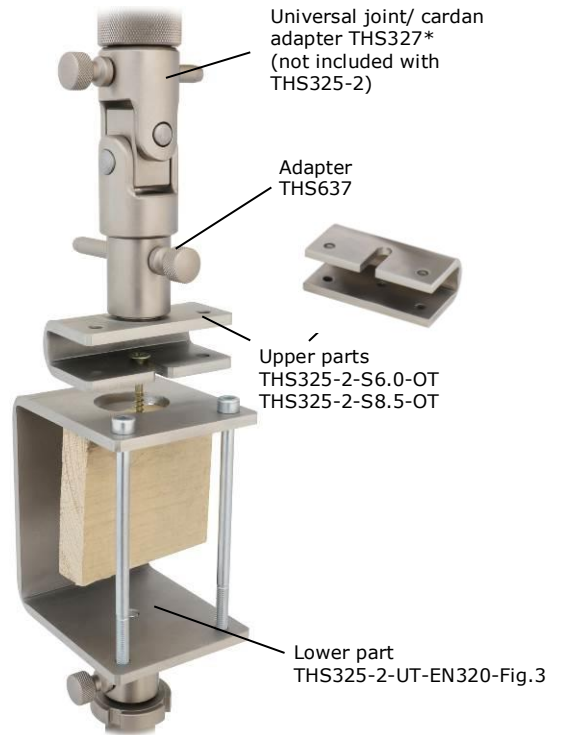


**Item no.:** THS325-2-EN320-Fig.3

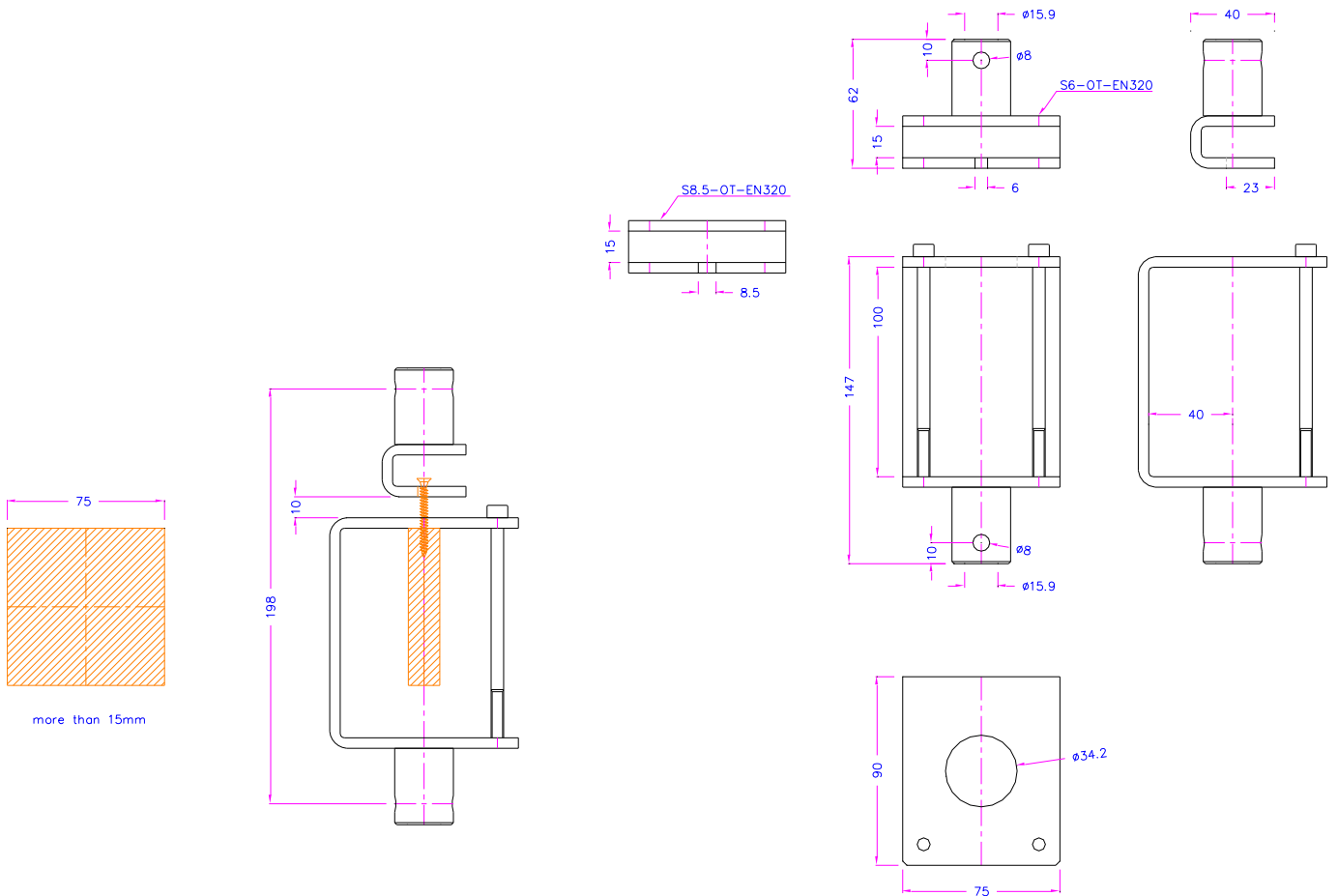
**Fixture to test resistance to axial withdrawal of screws for wooden samples according to DIN EN320 Fig. 3**

**For wooden plates  $\geq 15$  mm thick**

- Max. load: 2 kN
- Coupling: Af159, Af20  
Further couplings on request
- Material: Upper part, lower part: stainless steel  
Adapter: steel, nickel-plated
- Temperature range: -70°C ... +180°C  
Further temperature ranges on request
- Weight: Ca. 1.5 kg (fixture excl. adapter)
- Scope of supply: THS325-2 fixture consisting of:
  - 2x upper parts with sample slots 8.5 mm and 6.0 mm
  - 1x lower part
  - 2x adapters THS637



- \*Available against surcharge:
- Universal joint adapter/ cardan adapter (see THS327)
  - Lower part THS325-2-UT-EN320-Fig.3



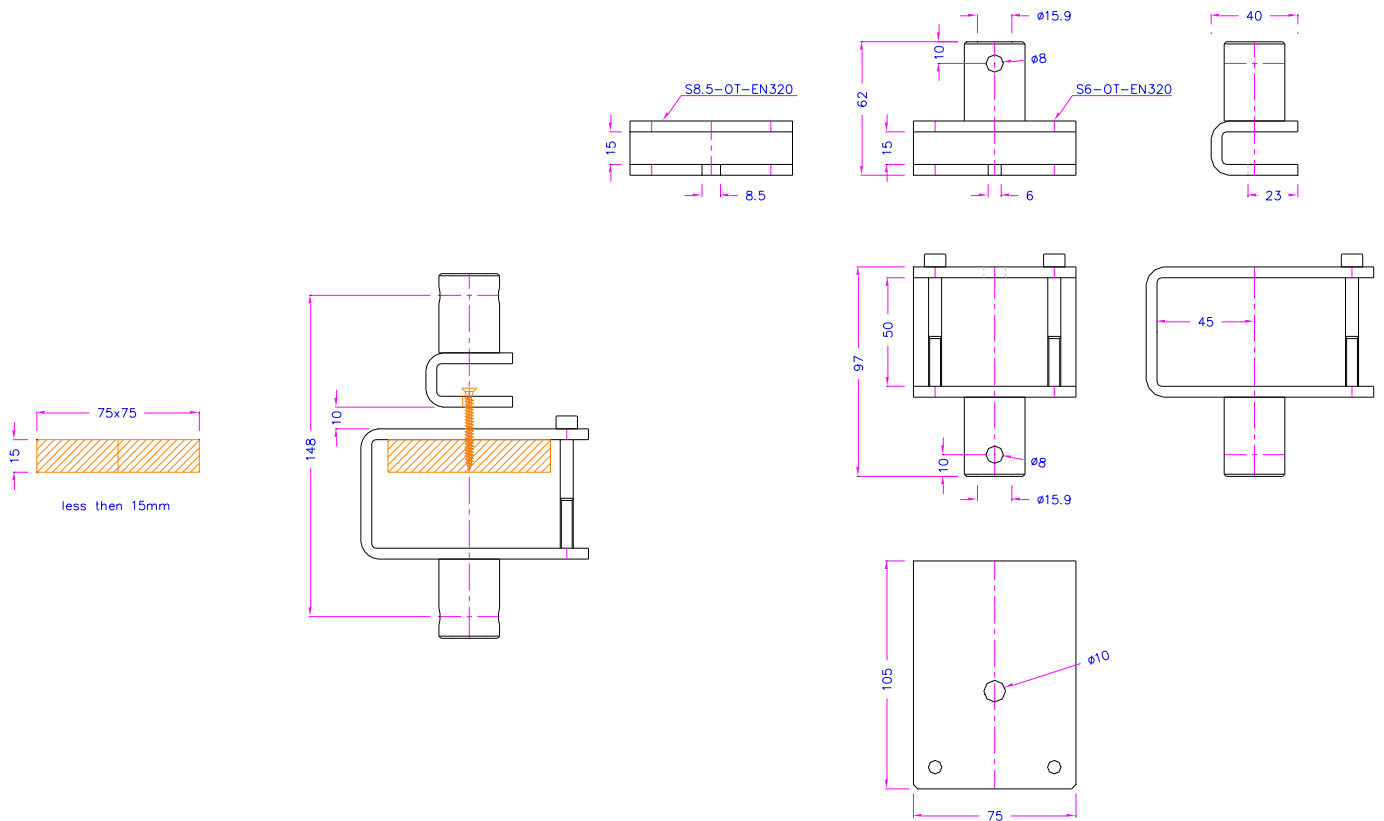
**Item no.:** THS325-2-EN320-Fig.1

**Fixture to test resistance to axial withdrawal of screws for wooden samples according to DIN EN320 Fig. 1**

**For wooden plates <15 mm thick**

- Max. load: 2 kN
- Coupling: Af159, Af20  
Further couplings on request
- Material: Upper part, lower part: stainless steel  
Adapter: steel, nickel-plated
- Temperature range: -70°C ... +180°C  
Further temperature ranges on request
- Scope of supply: THS325-2 fixture consisting of:
  - 2x upper parts with sample slots 8.5 mm and 6.0 mm
  - 1x lower part
  - 2x adapters THS637

- \*Available against surcharge:
- Universal joint adapter/ cardan adapter (see THS327)
  - Lower part THS325-2-UT-EN320-Fig.1



11.08.2022OI