

SMALL PINCER GRIPS

Versatile, easy to use. Applicable for small specimens, for example, foils, electronic components, etc.

THS341-F (Type F) adapter is directly mounted to the grip (without chain).

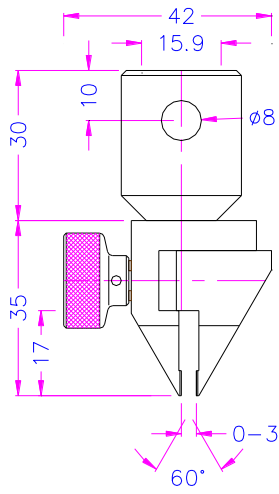
THS341-K (Type K) chain mounting enables flexible positioning. Adapter is attached to the chain.



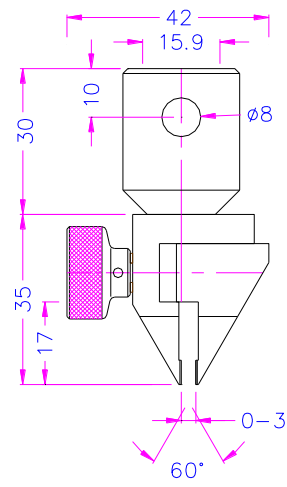
Item no.:	THS341-X-F THS341-X-K X (jaw width) = 6, 10, 15 mm
Max. tensile force:	100 N
Jaw opening:	0 – 3 mm
Coupling:	Af159 or Af20. Further couplings on request
Jaw clamping surface (height x width):	5 x 6 mm for THS341-6-F and THS341-6-K
	5x10 mm for THS341-10-F and THS341-10-K
	10x15 mm for THS341-15-F and THS341-15-K
Jaw surface:	Pyramid jaws (serrated), 0.6x45°
Grip:	Hardened steel, nickel-coated
Adapter:	Aluminium, anodized
Chain:	Total length 150 mm; chain link: Ø1.9, length 16.6 mm V4A stainless steel
Temperature range:	0 ... +180°C. Further temperature ranges on request
Scope of delivery:	1 grip incl. adapter (THS341-F) 1 grip incl. adapter and chain (THS341-K)

Item no.:	Weight:
THS341-6-F	76 g with Af159 adapter
THS341-6-K	90 g with Af159 adapter
THS341-10-F	80 g with Af159 adapter
THS341-10-K	94 g with Af159 adapter
THS341-15-F	111 g with Af159 adapter
THS341-15-K	125 g with Af159 adapter

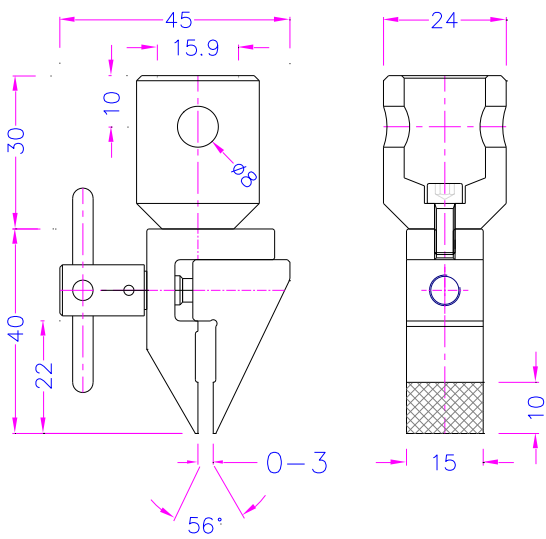
Type F - Direct Adapter Modifications



THS341-6-F



THS341-10-F



THS341-15-F



THS341-6-F

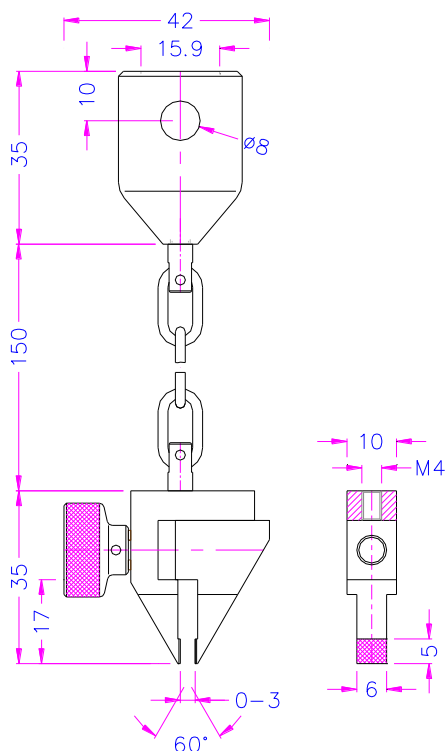


THS341-10-F

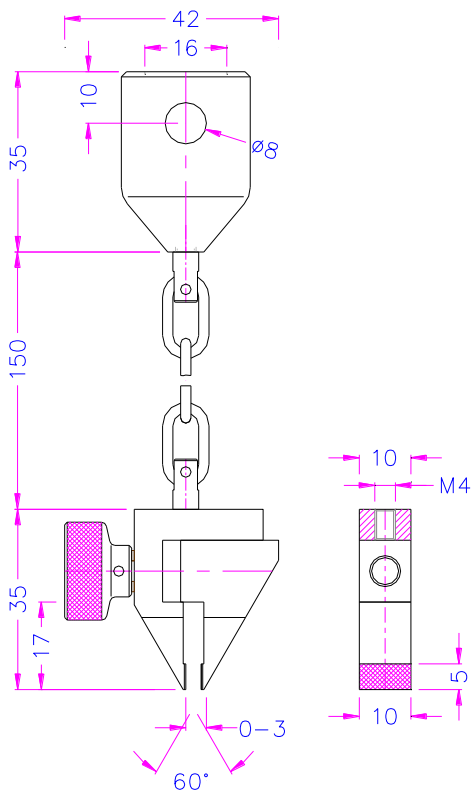


THS341-15-F

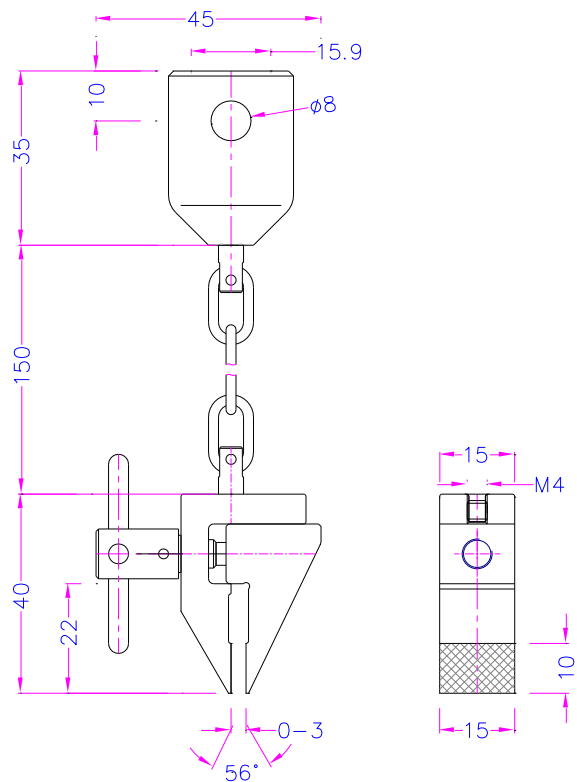
Type K - Chain Modifications



THS341-6-K



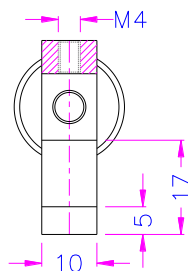
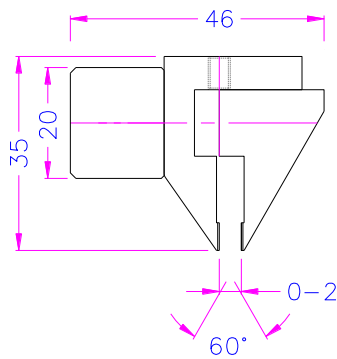
THS341-10-K



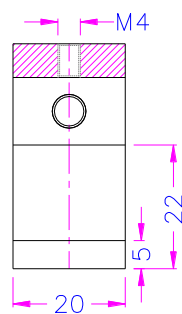
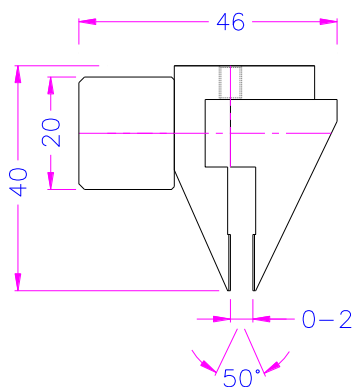
THS341-15-K

Pneumatic modifications

Item no.:	THS341-10+Ko THS341-20+Ko
Clamping force:	130 N at 7 bar
Jaw opening:	0-2 mm
Coupling:	M4 internal thread. Further couplings on request.
Clamping surface (w x h):	10x5 mm (THS341-10+Ko) 20x5 mm (THS341-20+Ko)
Jaw surface:	Pyramid jaws (serrated), 0.6x45°
Body:	Steel, nickel-plated
Pneumatic cylinder:	Aluminium, anodized
Temperature range:	0 ... +70°C. Further temperature ranges on request.
Weight without adapter:	62 g (THS341-10+Ko) 112 g (THS341-20+Ko)
Scope of supply:	1 grip incl. adapter



THS341-10+Ko



THS341-20+Ko



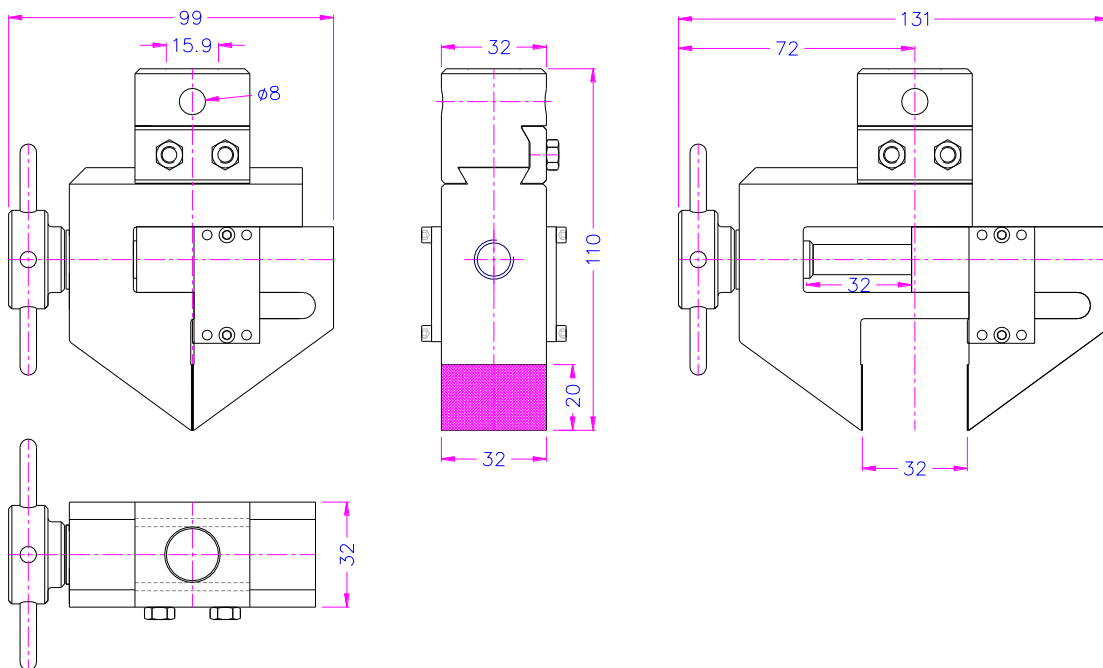
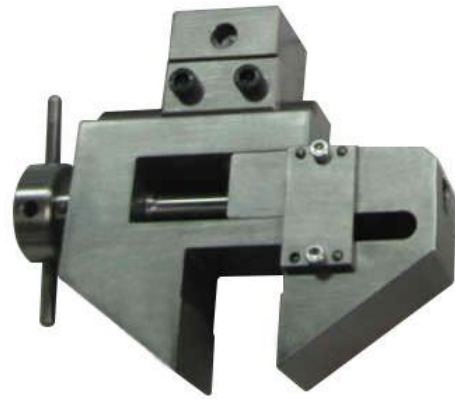
Examples for customized solutions

THS341-32x20-AKL159

A larger modification to test samples of different sizes.
The slidable adapter allows aligning the test axis.

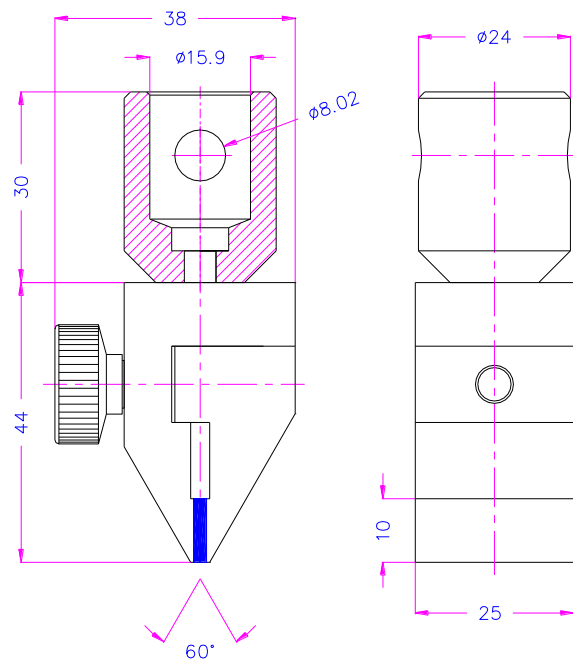
Jaw opening 0-32 mm

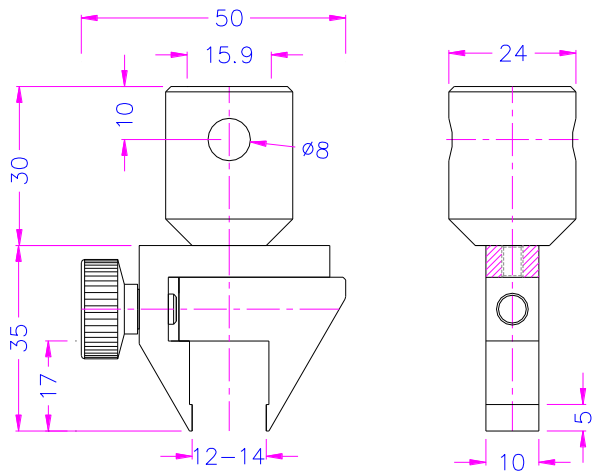
Pyramid (serrated) clamping surface 32x20 mm (w x h)



THS341-25-BG-Af159

Rubber-coated jaws for sensitive samples
Special jaw width 25 mm





THS341-10-S14-Af159

THS341-10-S14-F-Af159

Special opening 12-14 mm

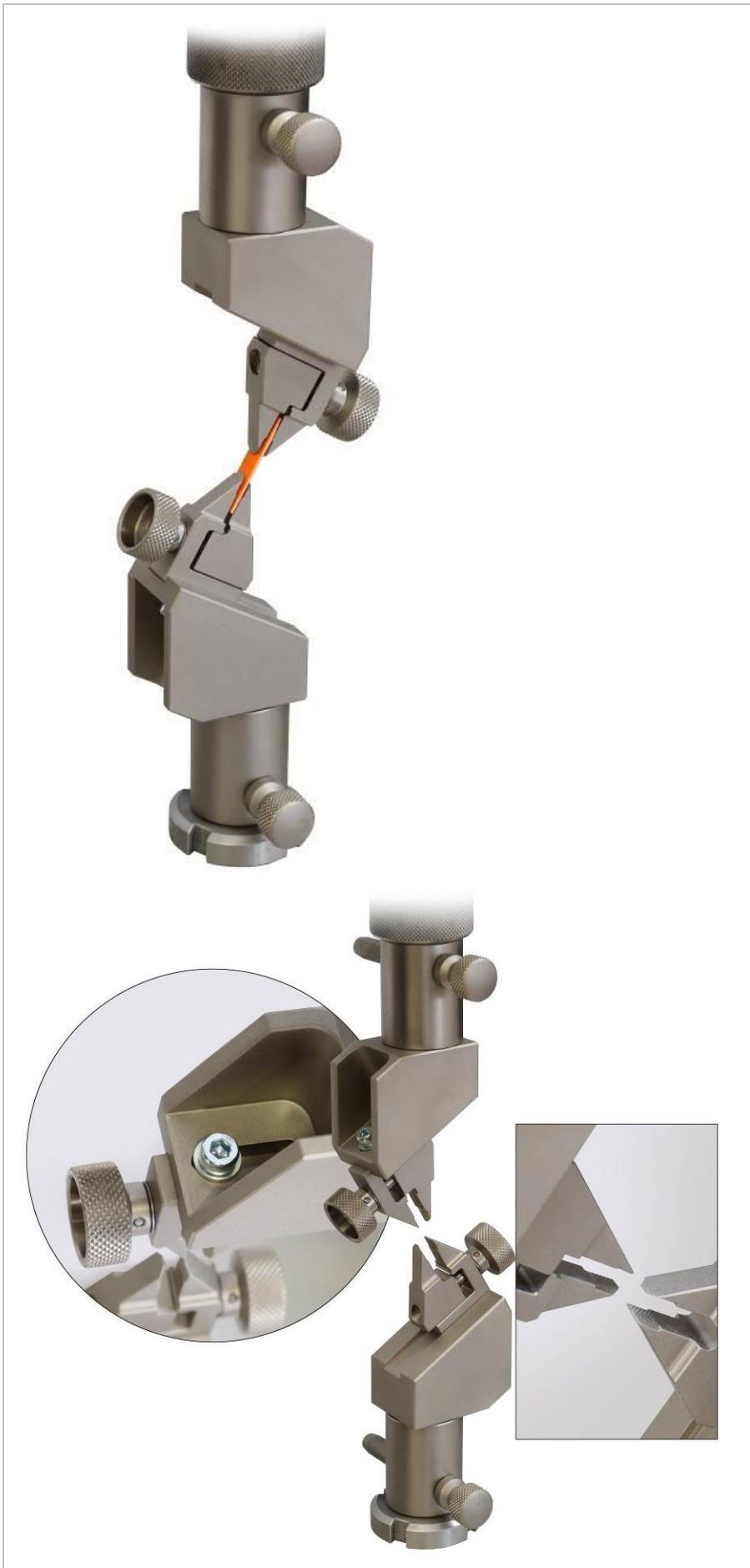


THS341-15-M6-2F-Ni-T150

Customized version with a built-in guide

For dynamic mechanical analysis in a temperature chamber

Temperature range up to 150 °C



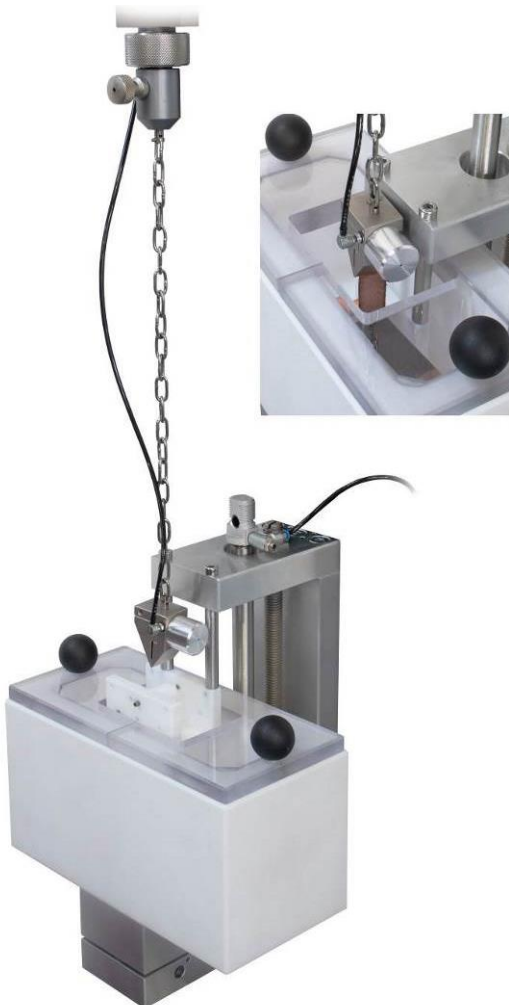
THS341-2x4-AW30-Af159

- Special version for tiny samples
- Jaw clamping surface 2x4 mm
- Pyramid (serrated) jaws
- 30° test angle
- Grips slidable by 13 mm left-right
- Steel, nickel-plated



THS341-150-F-H28-Af159

- Special version for wide samples
- Jaw clamping surface 150x5 mm
- Pyramid (serrated) jaws
- Jaw opening 0-3 mm
- Steel, nickel-plated



**THS341-10+Ko
+ THS1485-20-04**

Cryogenic peel test in liquid nitrogen

Similar grips

See www.grip.de/G05

			
<p>THS470 Datasheet</p>	<p>THS501 (pneumatic) Datasheet</p>	<p>THS205k Datasheet</p>	<p>THS7-10 (wedge grip) Datasheet</p>