

FRACTURE MECHANICS CLEVIS GRIPS

to test linear-elastic plane-strain fracture toughness and tensile properties.

Clevis grips are available in various sizes and forms.

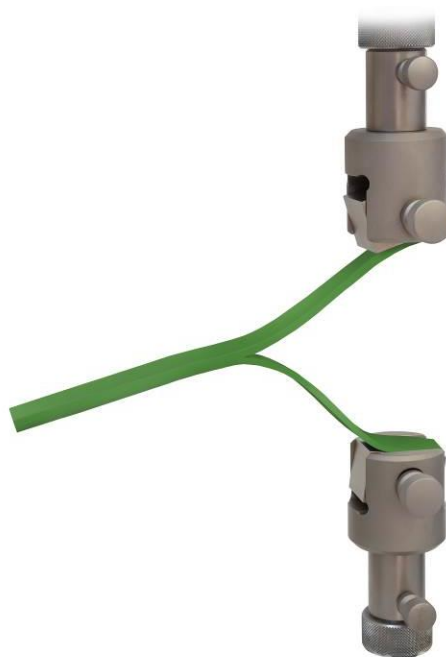
Item no.: THS353-AxB-C-D

A = pin size
 B = opening size gap
 C = coupling size
 D = style

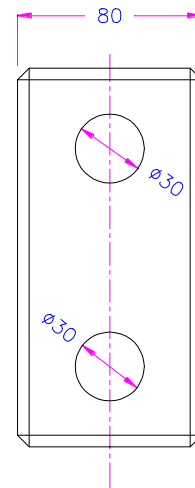
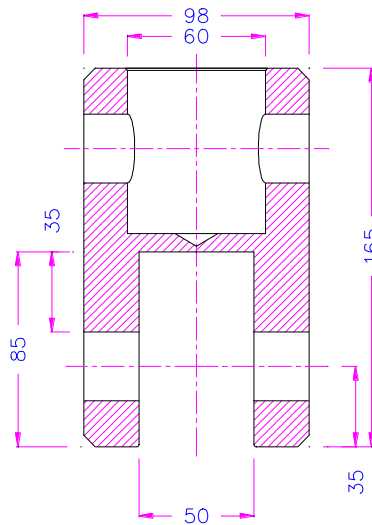
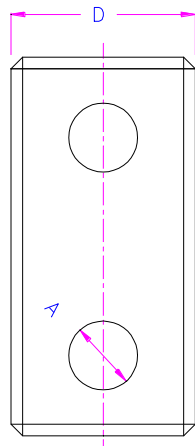
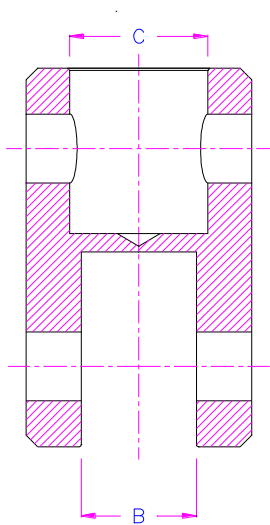
Max. load: Depends on coupling size and dimensions A and B

Temperature range: 0 ... +70°C
 Further temperature ranges on request

Scope of supply: 1 pair



D= C rectangle Rechteck
 D= Q quadrat
 D= R Round



THS353-AxB-C-D

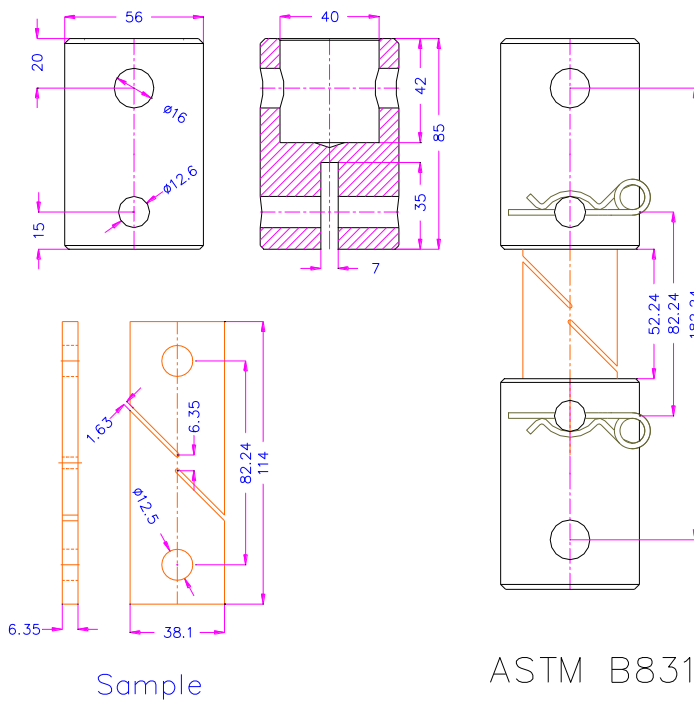
THS353-30x50-Af60-C98x80

Examples for THS353 grips:



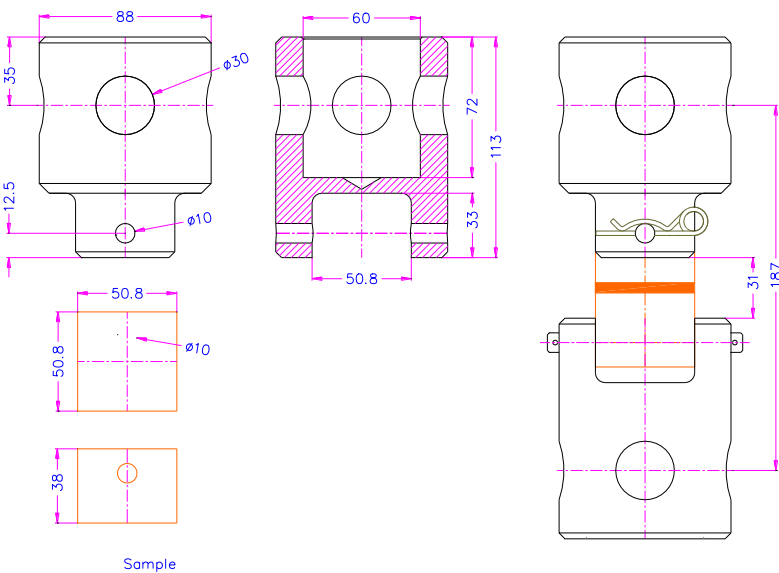
THS353-7x15-Af159-Q28-ASTM E399

Linear-Elastic Plane-Strain Fracture Toughness K_{Ic} of Metallic Materials according to ASTM-E399



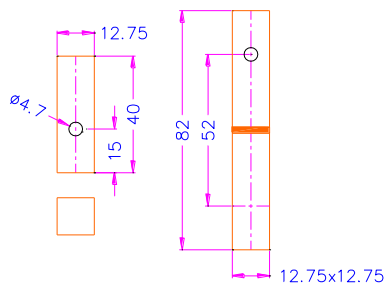
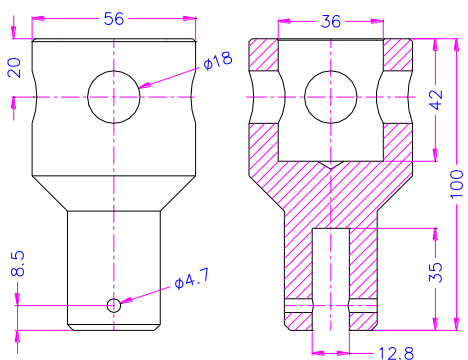
THS535-12.6x7-Af40-R56-ASTM B831

Shear Testing of Thin Aluminum Alloy Products according to ASTM-B831

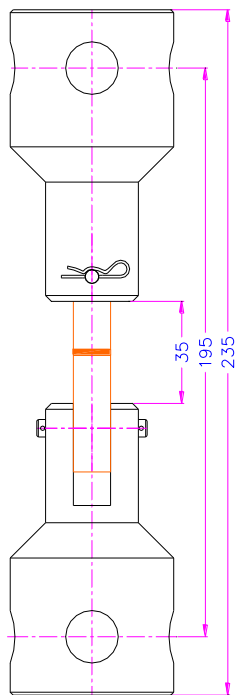


THS353-10x50.8-Af60-R88-ASTM C297

Flatwise Tensile Strength of Sandwich Constructions according to ASTM-C297



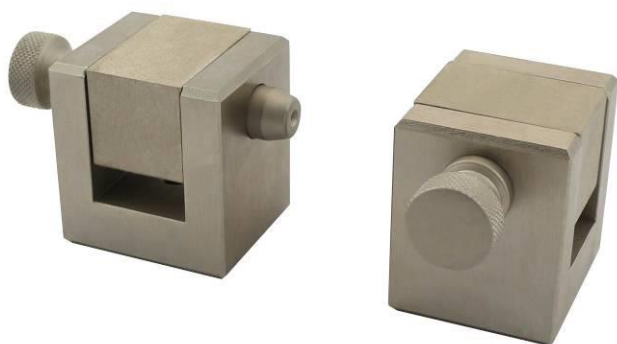
E12.8



ASTM-D2095

THS353-4.7x12.8-Af36-R56-ASTM-D2095

Tensile Strength of Adhesives by Means of Bar and Rod Specimens according to ASTM-D2095



THS353-13x25.4-Af159-Q48-ASTM-D5528

Mode I Interlaminar Fracture Toughness of Unidirectional Fiber-Reinforced Polymer Matrix Composites according to ASTM-D5528-Fig.A.1.1(b)

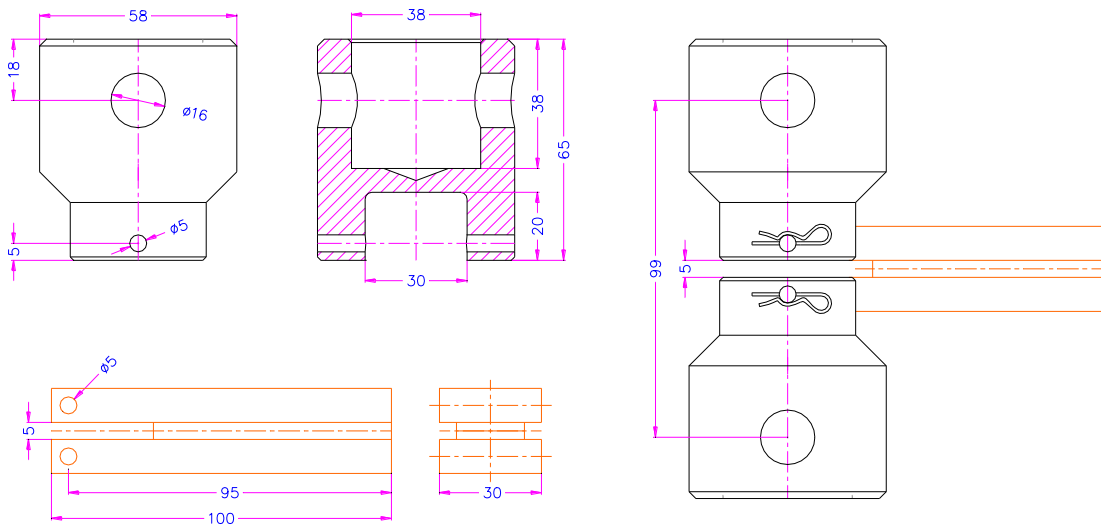


THS353-12.8x76-Am35-C100x40-ASTM-F1717

Spinal Implant Constructs in a Vertebrectomy Model according to ASTM-F1717

THS353-5x30-Af38-R58-EN12814-4

EN 12814-4 (Fig. 5): Testing of welded joints of thermoplastics semi-finished products - Part 4: Peel test



THS353-20-25-30-Af159-ISO13953-ISO6259-3

ISO13953 (Type A, Type B): Polyethylene (PE) pipes and fittings - Determination of the tensile strength and failure mode of test pieces from a butt-fused joint

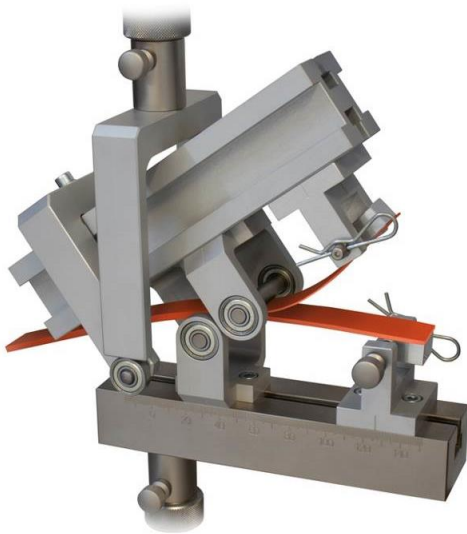
ISO6259-3 (Type 3): Thermoplastics pipes - Determination of tensile properties - Part 3: Polyolefin pipes

THS353-30x105-Af159-C80x160-ISO13953-ISO6259-3

ISO 13953 (Type B): Polyethylene (PE) pipes and fittings - Determination of the tensile strength and failure mode of test pieces from a butt-fused joint

ISO 6259-3 (Type 3): Thermoplastics pipes - Determination of tensile properties - Part 3: Polyolefin pipes

See also:



THS815

Mixed-Mode interlaminar shear strength test fixture according to ASTM-D6671

[THS815 Datasheet.pdf](#)



THS1266-20

Mode I Interlaminar shear strength according to ASTM-D5528-Fig.A1.1(a)