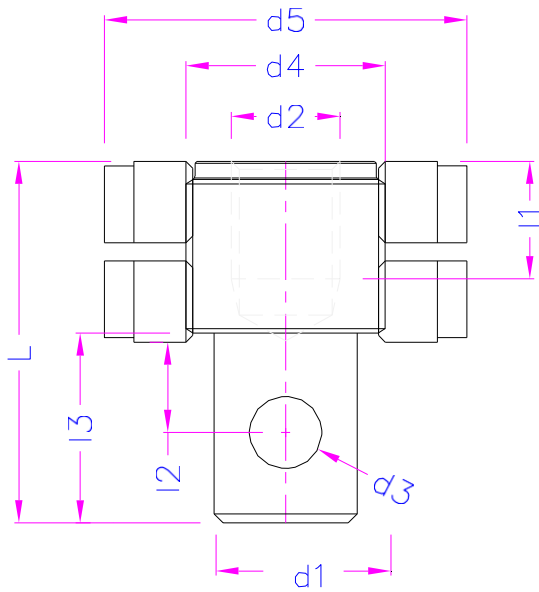


THS438



THS438-d1-d2

Item:	d1	d2	d3	d4	d5	L	l1	l2	l3	Material	Stock-Status
THS438-8-M5-M10-V2a	8	M5	3	M10	25	20	7	6	12	SST	No
THS438-8-M6-M10-Alu	8	M6	3	M10x1	25	22	8	6	13	Alu	In stock
THS438-8-10-32-M10	8	10-32 UNF	3.1	M10	25	20	6	6	12.2	Steel Ni	No
THS438-8-1/4Z-28-M12-Al	8	1/4-28 UNF	3.1	M12x1	28	25	6	6	13	Alu	No
THS438-12-M6-M16	12	M6	6	M16x1.5	32	28	10	9	20	Steel Ni	No
THS438-12-1/4Z-28-M14-V2a	12	1/4-28 UNF	6	M14x1.5	30	35	10	9	20	SST	No
THS438-14-M6-M20-V2a	14	M6	6	M20x1.5	38	35	7.8	8	18.1	SST	No
THS438-1416-M8-M18	14	M8	6	M18x1.5	34	33.5	12	8	17	Steel Ni	No
THS438-1416-M8-M20	14	M8	6	M20x1.5	36	35.4	12	8	18.5	Steel Ni	No
THS438-1416-M12-M20	14	M12	6	M20x1.5	36	35	10	8	18	Steel Ni	No
THS438-158-M4-M18	15.8	M4	8	M18x1.5	34	40	8	10	20.5	Steel Ni	In stock
THS438-158-M5-M22	15.8	M5	8	M22x1.5	40	39.5	10	10	20.5	Steel Ni	In stock
THS438-158-M6-M18-Alu	15.8	M6	8	M18x1.5	34	40	12	10	21	Alu	In stock
THS438-158-M6-M18	15.8	M6	8	M18x1.5	34	40	12	10	20.5	Steel Ni	In stock
THS438-158-M8-M18-Alu	15.8	M8	8	M18x1.5	34	40	12	10	20.5	Alu	In stock
THS438-158-M8-M18	15.8	M8	8	M18x1.5	34	40	12	10	20.5	Steel Ni	In stock
THS438-158-M8-M22	15.8	M8	8	M22x1.5	40	40	16	10	21	Steel Ni	In stock
THS438-158-M10-M18	15.8	M10	8	M18x1.5	34	40	15	10	20.5	Steel Ni	In stock
THS438-158-M10-M22	15.8	M10	8	M22x1.5	40	39.5	15	10	20.5	Steel Ni	In stock
THS438-158-M12-M22	15.8	M12x1.25	8	M22x1.5	40	40	13	10	20.5	Steel Ni	In stock
THS438-158-M12-M22	15.8	M12	8	M22x1.5	40	39.5	13	10	20.5	Steel Ni	No
THS438-158-M12-M22	15.8	M12	8	M22x1.5	40	40	13	10	21	Steel Ni	In stock
THS438-158-M12-M22-V2a	15.8	M12	8	M22x1.5	40	39.5	13	10	20.5	SST	In stock
THS438-158-M14-M22	15.8	M14	8	M22x1.5	40	39.5	12	10	20.5	Steel Ni	No
THS438-158-M16-M22	15.8	M16	8	M22x1.5	40	40	13	10	20.5	Steel Ni	In stock
THS438-158-M16-M24-V2a	15.8	M16	8	M24x2	40	50	16	10	20.5	SST	In stock
THS438-158-M18-M25-L50	15.8	M18x1.5	8	M25x1.5	44	84	45	10	20.5	Steel Ni	No
THS438-158-M20-M30	15.8	M20x1.5	8	M30x1.5	50	52	20	10	20.5	Steel Ni	No
THS438-158-M30-M40	15.8	M30x2	8	M40x1.5	62	67	35	10	20.5	Steel Ni	No
THS438-158-6/32Z-M22	15.8	6/32 UNC	8	M22x1.5	40	39.5	7.5	10	20.5	Steel Ni	In stock
THS438-158-10/32Z-M22	15.8	10/32 UNF	8	M22x1.5	40	39.5	10	10	20.5	Steel Ni	In stock
THS438-158-1/4Z-20-M18	15.8	1/4-20 UNC	8	M18x1.5	34	40	11	10	20.5	Steel Ni	No
THS438-158-1/4Z-28-M18	15.8	1/4-28 UNF	8	M18x1.5	34	40	11	10	20.5	Steel Ni	In stock
THS438-158-1/4Z-28-M22-V2a	15.8	1/4-18 UNF	8	M22x1.5	40	39.5	10.5	10	20.5	SST	In stock
THS438-158-5/16Z-18-M22	15.8	5/16-18 UNC	8	M22x1.5	35	40	16	10	21	Steel Ni	In stock
THS438-158-5/16Z-24-M22-V2a	15.8	5/16-24 UNF	8	M22x1.5	40	39.5	12	10	20.5	SST	In stock
THS438-158-3/8Z-16-M18	15.8	3/8-16 UNC	8	M18x1.5	34	40	13	10	20.5	Steel Ni	No

THS438-158-3!8Z-24-M18	15.8	3!8-24 UNF	8	M18x1.5	34	40	15	10	20.5	Steel Ni	In stock
THS438-158-3!8Z-24-M22	15.8	3!8-24 UNF	8	M22x1.5	40	39.5	12.5	10	20.5	Steel Ni	In stock
THS438-158-1!2Z-20-M22	15.8	1!2Z-20 UNF	8	M22x1.5	35	40	13	10	21	Steel Ni	In stock
THS438-158-5!8Z-18-M22	15.8	5!8-18 UNF	8	M22x1.5	40	40	13	10	21	Steel Ni	In stock
THS438-158-5!8Z-18-M22-A4	15.8	5!8-18 UNF	8	M22x1.5	40	40	13	10	21	SST	In stock
THS438-158-3!4Z-10-M25-V2a	15.8	5!4-10 UNC	8	M25x1.5	40	42	13.5	10	20.5	SST	In stock
THS438-158-3!4Z-16-M25	15.8	3!4-16 UNF	8	M25x1.5	44	42.5	14.1	10	20.5	Steel Ni	In stock
THS438-158-3!4Z-16-M24-V2a	15.8	3!4-16 UNF	8	M24x1.5	40	63.5	30	10	21	SST	In stock
THS438-158-1!12Z-M30	15.8	1!12 UNF	8	M30x1.5	50	42	15.4	10	21	Steel Ni	In stock
THS438-158-1Z-8-M32	15.8	1-8 UNC	8	M32x1.5	52	45	15	10	21	Steel Ni	No
THS438-158-1Z-14-M35	15.8	1-14 UNS	8	M35x1.5	55	50	15	10	21	Steel Ni	No
THS438-1665-M5-M20	16	M5	6.5	M20x1.5	36	39	18	12	23	Steel Ni	No
THS438-1665-M6-M20	16	M6	6.5	M20x1.5	36	39	20	12	23	Steel Ni	No
THS438-1665-M8-M18	16	M8	6.5	M18x1.5	34	40	20	12	23	Steel Ni	No
THS438-1665-M12-M18	16	M12	6.5	M18x1.5	36	40	17	12	13	Steel Ni	No
THS438-1665-M16-M22	16	M16	6.5	M22x1.5	40	43	15	12	23	Steel Ni	No
THS438-1665-M16-M24	16	M16	6.5	M24x1.5	40	55	20	12	23	Steel Ni	No
THS438-1665-G3!8-M24	16	G3!8	6.5	M24x1.5	40	55	20	12	23	Steel Ni	No
THS438-20-M6-M22-V2a	20	M6	8	M22x1.5	40	40	16	10	21	SST	No
THS438-20-M6-M22	20	M6	8	M22x1.5	40	42	16	10	22	Steel Ni	In stock
THS438-20-M8-M22-V2a	20	M8	8	M22x1.5	40	40	15	10	21	SST	In stock
THS438-20-M8-M22	20	M8	8	M22x1.5	40	42	15	10	22	Steel Ni	In stock
THS438-20-M10-M22-V2a	20	M10	8	M22x1.5	40	40	15	10	21	SST	In stock
THS438-20-M10-M22	20	M10	8	M22x1.5	40	42	18	10	22	Steel Ni	In stock
THS438-20-M12-M22-V2a	20	M12	8	M22x1.5	40	40	15	10	21	SST	In stock
THS438-20-M12-M22	20	M12	8	M22x1.5	40	42	18	10	22	Steel Ni	In stock
THS438-20-M16-M28	20	M16	10	M28x1.5	50	51	15	15	30	Steel Ni	No
THS438-20-5!16Z-24-M25	20	5!16-24 UNF	8	M25x1.5	40	39.5	16	10	20.5	Steel Ni	In stock
THS438-25-M6-M30-V2a	25	M6	10	M30x1.5	50	49.5	12	14	29	SST	No
THS438-25-M8-M30-V2a	25	M8	10	M30x1.5	50	49.5	10.4	14	29	SST	No
THS438-25-M10-M30	25	M10	10	M30x1.5	50	49.5	15	14	29	Steel Ni	No
THS438-25-M12-M30	25	M12x1.25	10	M30x1.5	50	60	20	14	29	Steel Ni	No
THS438-25-M14-M30	25	M14x1.25	10	M30x1.5	50	65	28	14	29	Steel Ni	No
THS438-25-M18-M30	25	M18x1.5	10	M30x1.5	50	70	30	14	29	Steel Ni	No
THS438-25-1!4Z-28-M30-V2a	25	1!4-28 UNF	10	M30x1.5	50	49.5	12	14	29	SST	In stock
THS438-25-10-5!8Z-18-M30-V2a	25	5!8-18 UNF	10	M30x1.5	50	49.5	14	14	29	SST	In stock
THS438-28-M12-M32-V2a	28	M12	12.2	M32x1.5	52	49.4	17.7	12	29.4	SST	No
THS438-317-M8-M35	31.7	M8	12.8	M35x1.5	55	65	16	25	43	Steel Ni	No
THS438-317-M10-35	31.7	M10	12.8	M35x1.5	55	60	13	25	43	Steel Ni	In stock
THS438-317-M12-M35	31.7	M12x1.5	12.8	M35x1.5	55	64.5	24	25	46.5	Steel Ni	In stock
THS438-317-M12-M35	31.7	M12	12.8	M35x1.5	55	55	19	25	43	Steel Ni	No
THS438-317-M16-M35	31.7	M16	12.8	M35x1.5	55	65	25	25	43	Steel Ni	In stock
THS438-317-M20-M35	31.7	M20	12.8	M35x1.5	55	64.5	26	25	46.5	Steel Ni	No
THS438-317-M24-M35	31.7	M24x1.5	12.8	M35x1.5	55	65	25	25	43	Steel Ni	No
THS438-317-3!8Z-16-M35	31.7	3!8-16 UNC	12.8	M35x1.5	55	64.5	18	25	46.5	Steel Ni	In stock
THS438-317-1!2Z-20-M35	31.7	1!2-20 UNF	12.8	M35x1.5	55	65	25	25	43	Steel Ni	In stock
THS438-317-5!8Z-18-M35	31.7	5!8-18 UNF	12.8	M35x1.5	55	65	20	25	43	Steel Ni	In stock
THS438-317-3!4Z-16-M35	31.7	3!4-16 UNF	12.8	M35x1.5	55	65	20	25	43	Steel Ni	In stock
THS438-317-3!4Z-10-M35	31.7	3!4-10 UNC	12.8	M35x1.5	55	55	22	15	33	Steel Ni	In stock
THS438-317-1Z-14UNS-M35	31.7	1-14 UNS	12.8	M35x1.5	55	64.5	24	25	46.5	Steel Ni	In stock
THS438-317-7!8Z-9-M35	31.7	7!8-9 UNC	12.8	M35x1.5	55	65	24	25	43	Steel Ni	No
THS438-317-1Z-8-M35	31.7	1-8 UNC	12.8	M35x1.5	55	65	24	25	43	Steel Ni	No
THS438-35-M6-M40	35	M6	13	M40x1.5	62	53	12	20	40	Steel Ni	No
THS438-35-M8-M40	35	M8	13	M40x1.5	62	53	16	20	40	Steel Ni	No
THS438-35-M10-M40	35	M10	13	M40x1.5	62	65	20	20	41	Steel Ni	In stock
THS438-35-M12-M38	35	M12x1.5	16	M38x1.5	58	53	16	20	41	Steel Ni	No
THS438-35-M12-M40	35	M12	13	M40x1.5	62	53	17	20	40	Steel Ni	No

Standard: Steel surface chemical nickel

Legend

- Alu Aluminum eloxated
- St Steel nickel coated
- SST Stainless steel V2a
- M Male adapter with nut
- Ni Chemical Nickel
- 2L 2 holes in female adapter