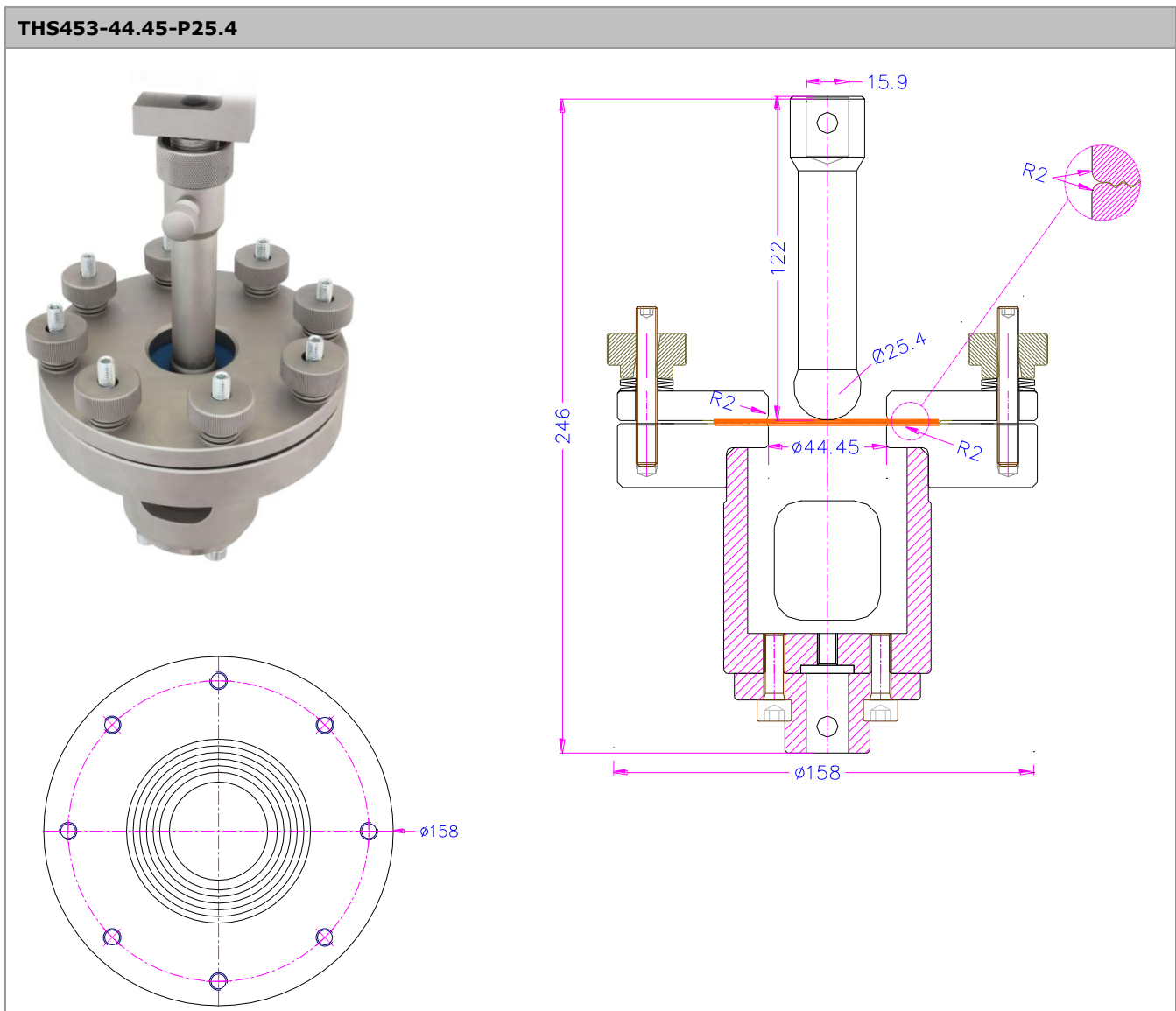


PUNCTURE FIXTURE

Fixture for testing bursting strength of textiles.
Textile sample is clamped between upper and lower ring and gets punctured by the pin.

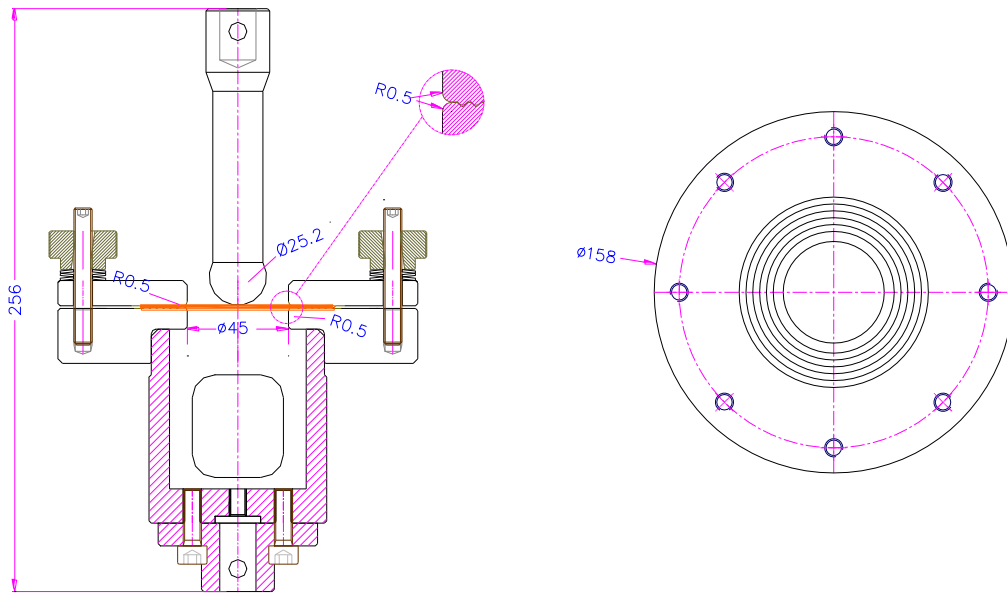
Item no.:	THS453-44.45-P25.4
Norm:	According to ASTM-D3787, ASTM-D6797, GB19976-2005, ASTM-D751-18.2, ISO9073-5
Max. load:	20 kN (Af159, Af20), 50 kN (Af318)
Coupling:	Af159, Af20, Af318 Further couplings on request
Material:	Steel, nickel-plated
Temperature range:	-40...+80°C Further temperature ranges on request
Weight:	Ca. 8 kg
Scope of delivery:	1 fixture incl. pin



Examples of special fixtures

All specifications subject to change without prior notice

THS453-45-P25.2
(according to ISO3303-1)



THS453-44.45-7.92
(according to ASTM-D751-22.1)

