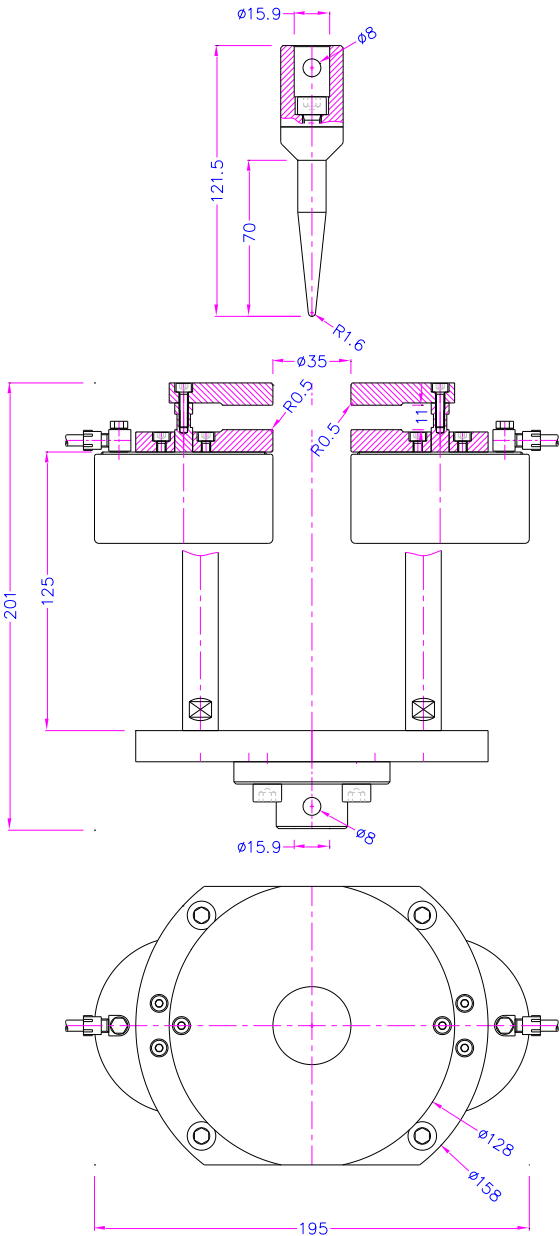
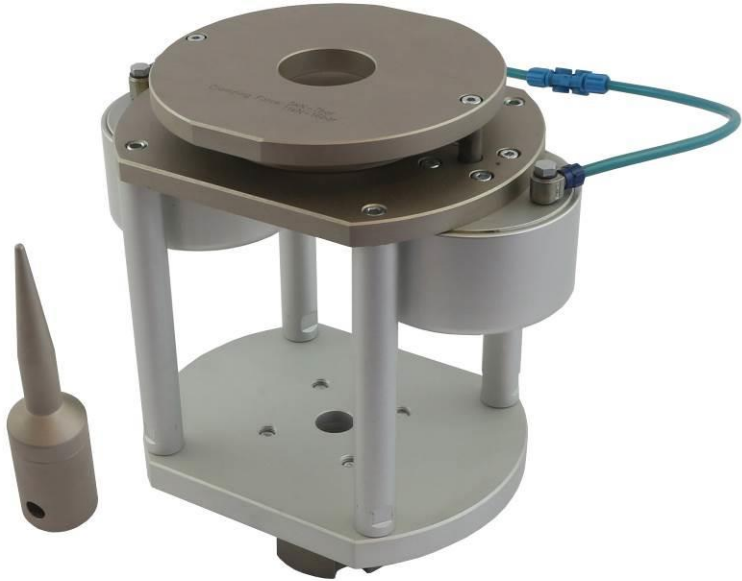


PNEUMATIC PUNCTURE TEST FIXTURE

to measure slow rate penetration resistance of flexible barrier films and laminates according to ASTM-F1306

| | |
|----------------------|---|
| Item no.: | THS656-D35-R1.6K12-2Kou-Af159 |
| Max. vertical load: | 3 kN |
| Max. clamping force: | 5 kN at 7 bar (9 kN at 12 bar) |
| Coupling: | Af159. Further couplings on request |
| Penetration probe: | 1.6 mm radius (0.06 in) |
| Sample hole Ø: | 35 mm (1.375 in) |
| Body: | Steel, nickel-plated |
| Temperature range: | 0 ... 70°C Further temperature ranges on request |
| Weight: | 5.2 kg per fixture |
| Scope of delivery: | Lower clamping fixture incl. upper penetration probe |





Video

<https://www.youtube.com/watch?v=dXoZIWknbho>

