

THS668-6scr

Heavy vise grips

THS668-A-B-C

A= Body width

B= 3scr = 3 screws

C= Adapter size

A= Korpusbreite

B= 3scr = 3 Schrauben

C= Adaptergröße



THS668-180-3scr

+

BW200

Wave jaws 200x100 mm

clamping force 600kN



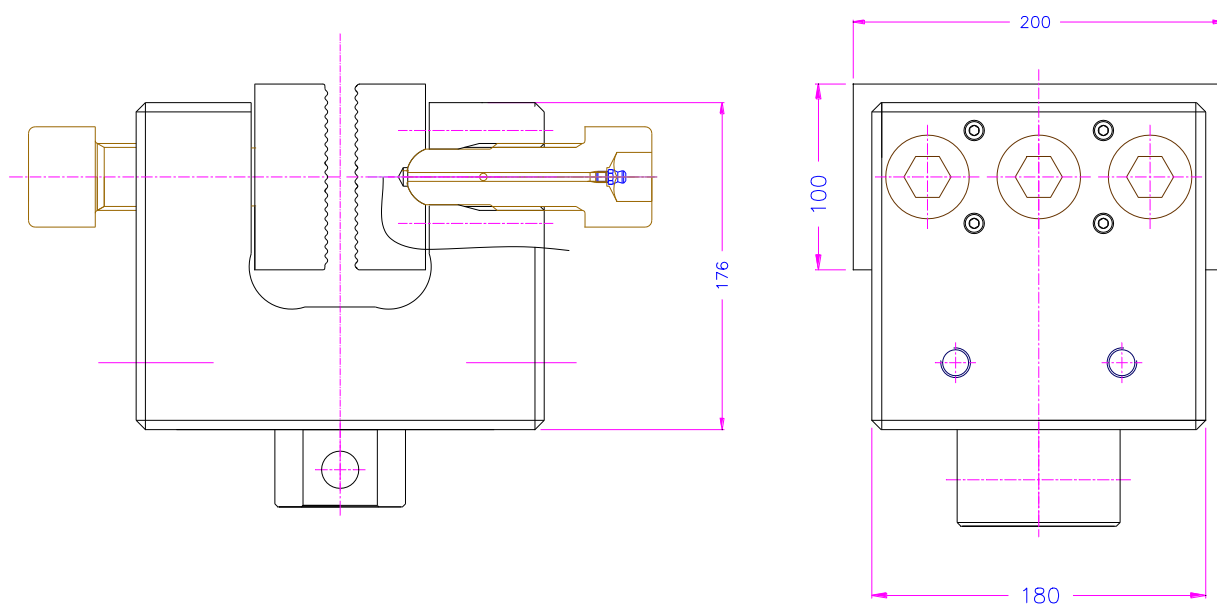
THS668-180-3scr-Af36

+

BW200

Adapter 36 mm





THS668-200-F100

THS668-250-4scr
+
BW

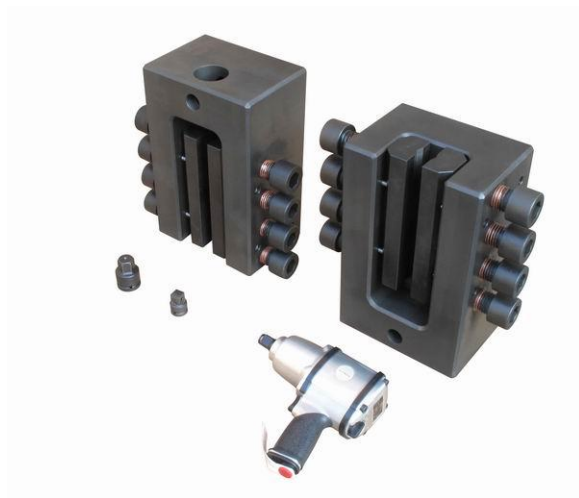


THS668-80-1scr-Af318

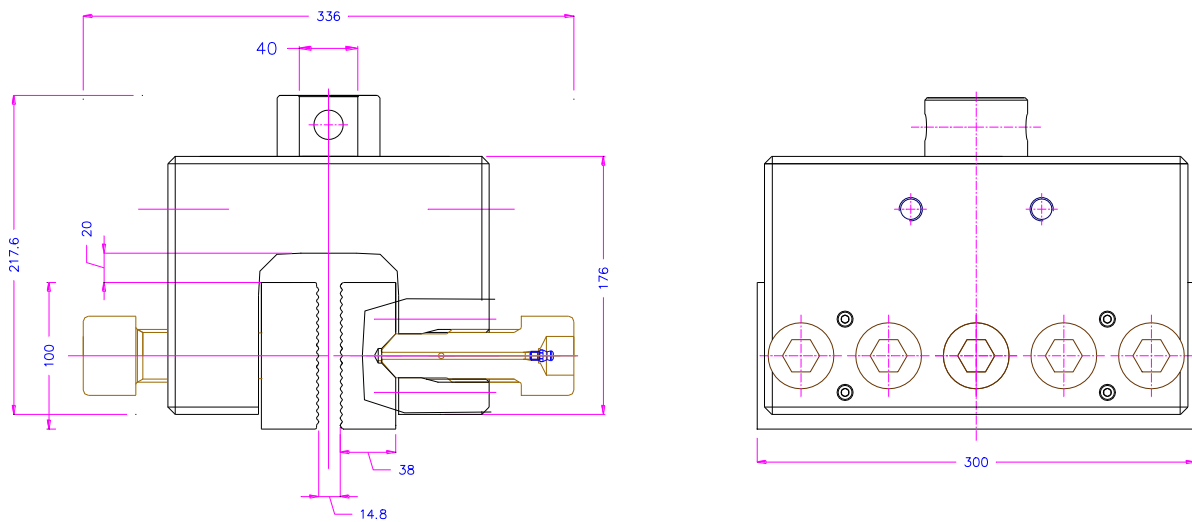
Ft 100kN
Fc 300kN (1500Nm)



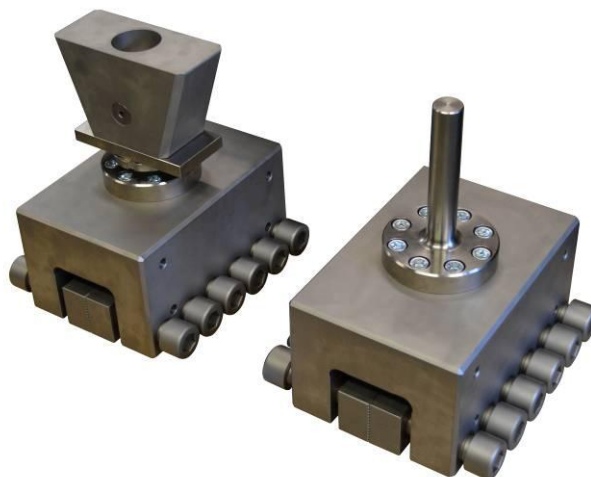
THS668-300-4scr-Af60-A90 →



THS668-280-5scr-Af40+BW300 ↓



**THS668-350-6scr
+
special adapter**



THS688-SD1500

Schlagschrauber
Impact Wrench

1500 Nm

4,7 kg 6,3 bar
340 l/min Max 990 l/min
89 dBA 3/4"

Screw must be greased with copper paste

OI14.04.2020