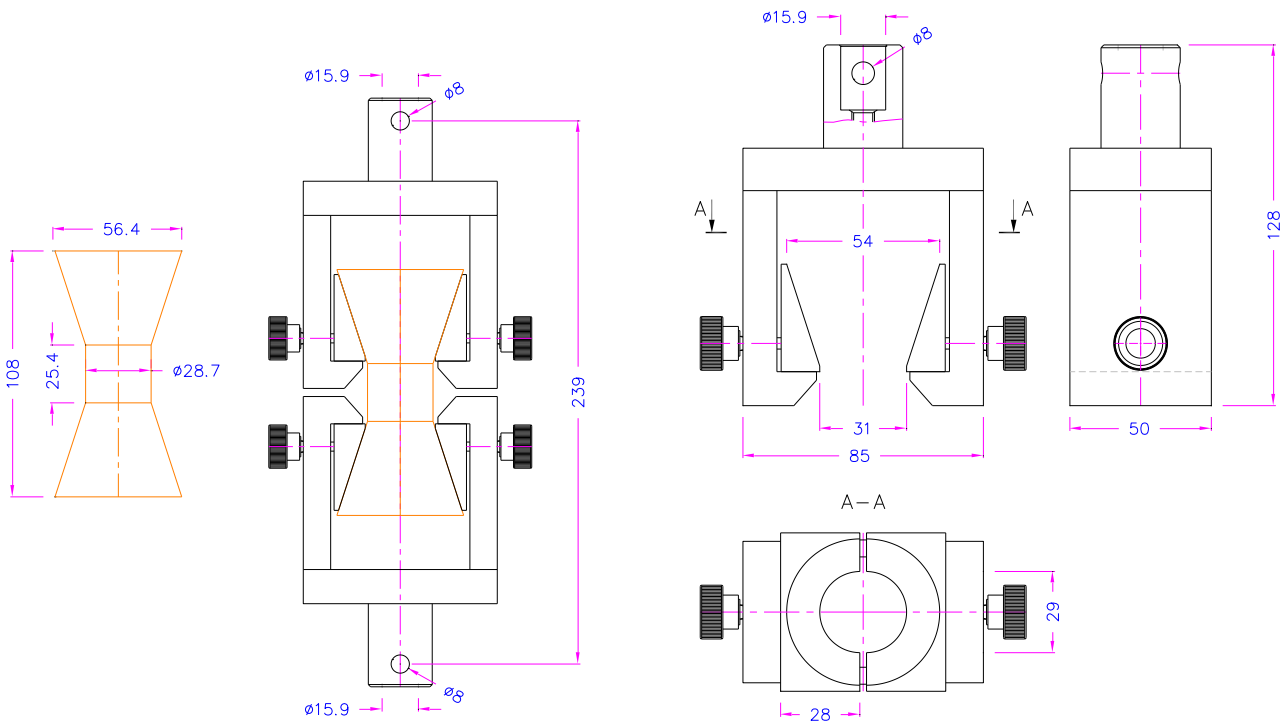


ASTM-D1623 TENSILE TEST FIXTURE

to test tensile properties of rigid cellular plastics according to ASTM-D1623, Type A specimen

| | |
|--------------------|--|
| Item no.: | THS701-ASTM-D1623-A |
| Max. load: | 10 kN |
| Standard coupling: | Af159. Further couplings on request |
| Body: | Steel, nickel-plated |
| Inserts: | Steel, nickel-plated, hardened |
| Weight per grip: | 4.1 kg |
| Temperature range: | 0 ... +70°C Further temperature ranges on request |
| Scope of delivery: | 1 fixture |



Inserts for holding the specimen