

THS747

Compression Jig
Ring crush test
ASTM-C1499

Max. load:
depends on coupling size

Vorrichtung zur Bestimmung der
Doppelringbiegefestigkeit
DIN51105 monolithischer
Keramik

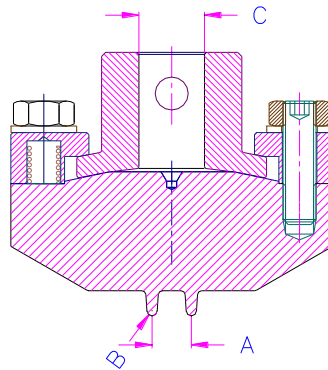


THS747-bm-96-1.5-Af159

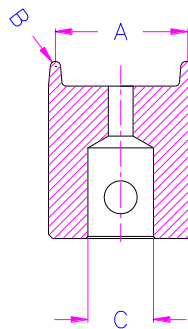
Lower platen hardened
Diameter 96 Radius R1.5 Adapter female 15.9/8

THS747-tp-20-15-Af159

Top platen hardened
moveable spherical seat principle of THS223k
Adapter female 15.9 hardened with a ring
Diameter 40 Radius 1.5



THS747-tp-A-B-C

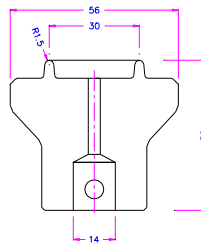


THS747-bm-A-B-C



THS747-lo-30-1.5-Af14

compression platen
lower ring for equibiaxial Testing
ring-on-ring loading
contact diameter 30 Radius 1.5
with a hole to let air out
Adapter female 14mm
ASTM-C1499



THS747-lo-30-1.5-Af14