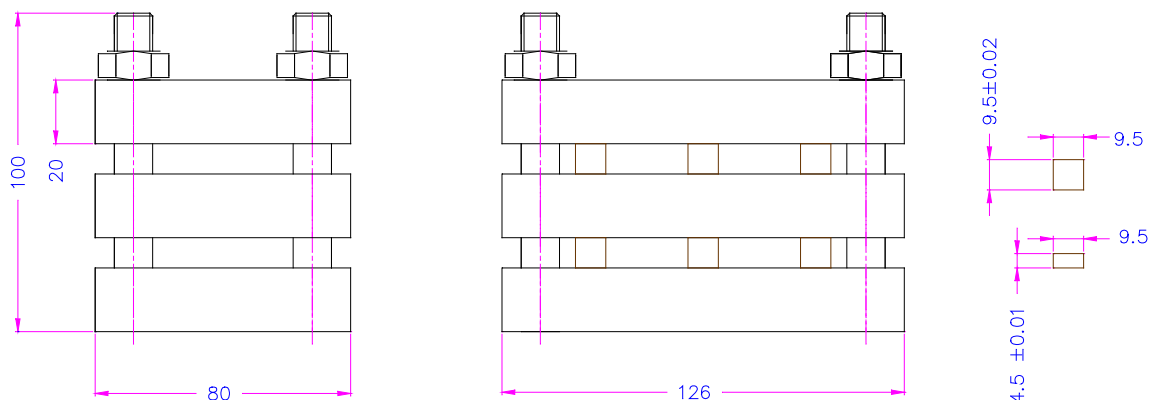
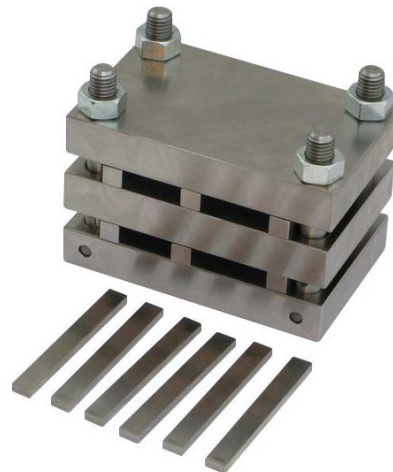


COMPRESSION SET FIXTURE

similar to ASTM-D395 Test Method B. Standard Test Methods for Rubber Property — Compression Set – Compression Set Under Constant Deflection In Air.

Test specimens are placed between the plates of the compression fixture.
The spacer bars are placed on each side of the specimen to define compression thickness.
The 4 nuts of the fixture are tightened.

Item no.:	THS757-20-3P
Spacer bars:	6 bars 9.5 ± 0.02 mm (0.375 ± 0.001 in.) thick and 6 bars 4.5 ± 0.01 mm (0.1770 ± 0.0005 in.) thick
Body:	Platens with max. $250 \mu\text{m}$ ($10 \mu\text{in.}$) roughness
Temperature range:	$-70 \dots +250^\circ\text{C}$ Further temperature ranges on request
Weight:	4.9 kg per fixture 0.34 kg 6x 9.5 mm spacer bars 0.16 kg 6x 4.5 mm spacer bars
Scope of delivery:	1 fixture incl. 6x 9.5 mm spacer bars and 6x 4.5 mm spacer bars



↑ THS757-20-3P

<- THS757-20-4P 4 platens

Further variants

See also: [THS757-60 Datasheet](#) similar to ASTM-D395 Method A

