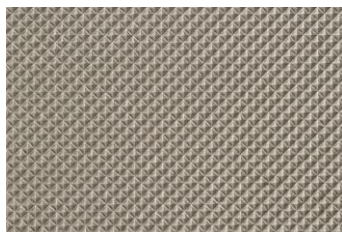
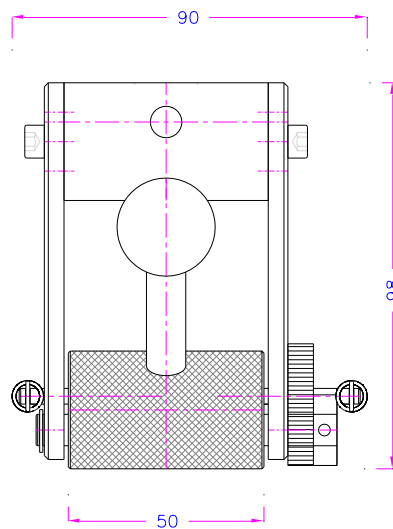
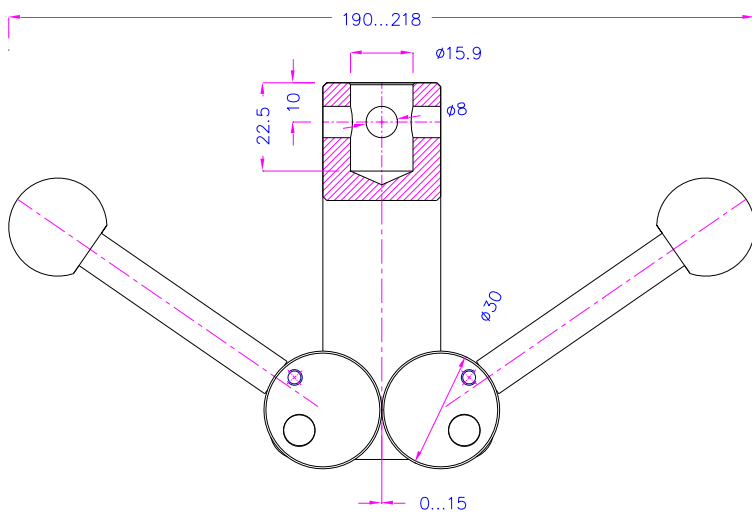


EXCENTRIC ROLLER GRIP

- Symmetric design
- Self-tightening non-slip gripping action
- Coupling with 2 pin holes allows the grip to be turned at 90° in a tensile machine

Item no.:	THS766-5-2L
Tensile force:	5 kN
Opening:	0-15 mm
Standard coupling:	Af159 or Af20 Further couplings on request
Roller:	30 mm Ø, 50 mm wide, pyramid (serrated)
Body:	Steel, nickel-plated
Temperature range:	0° ... +70°C Further temperature ranges on request
Weight:	1.4 kg per grip
Scope of delivery:	1 pair of grips



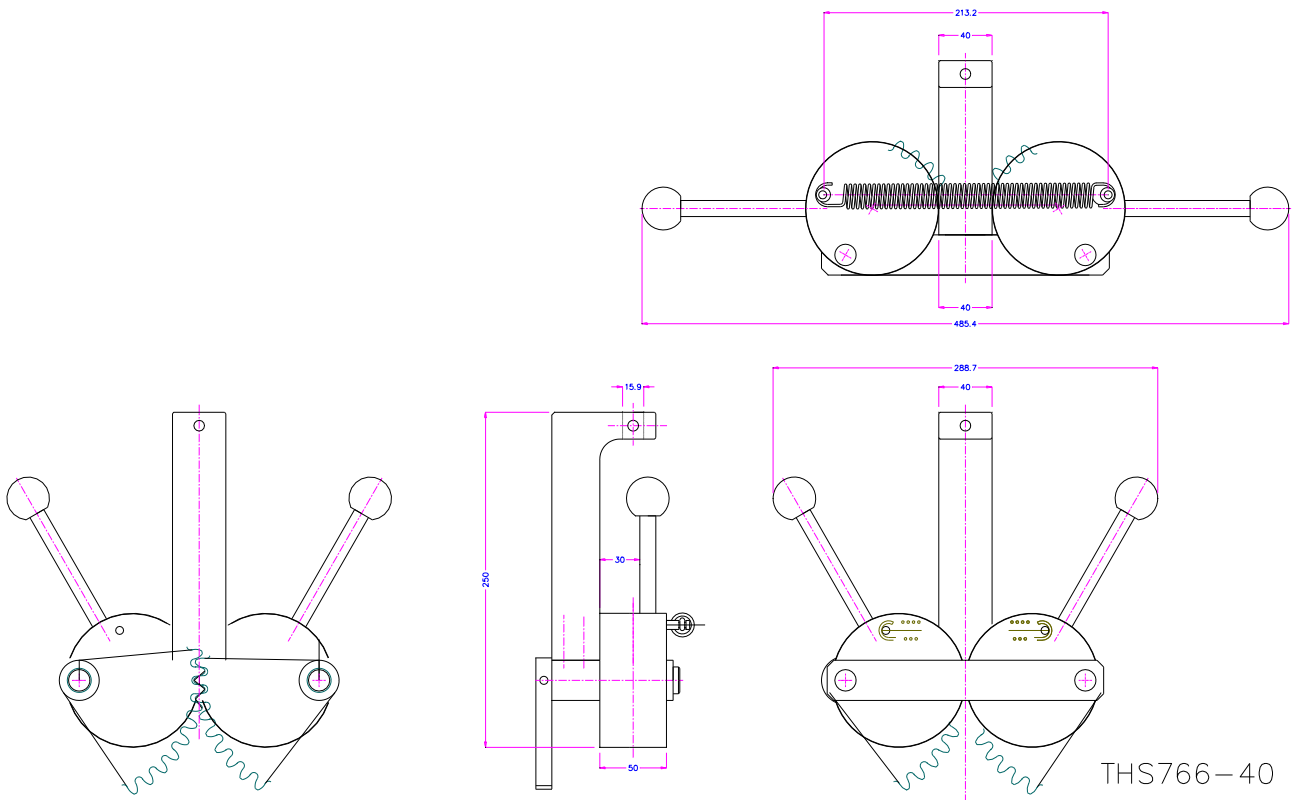
Serrated roller surface

Examples for customized solutions:

Item no.:	THS766-1-BP-W20
Tensile force:	1 kN
Opening:	0-10 mm
Coupling:	Af159
Roller:	25 mm Ø, 20 mm wide, serrated
Body:	Steel, nickel-plated
Temperature range:	0° ... +70°C Further temperature ranges on request
Weight:	0.5 kg per grip
Scope of delivery:	1 pair of grips



Item no.:	THS766-40
Tensile force:	5 kN
Opening:	0-40 mm
Roller:	100 mm Ø, 50 mm wide, smooth
Coupling:	Af159
Body:	Steel
Weight:	2 kg per grip
Scope of delivery:	1 pair of grips



THS766-40