

CHUCK GRIP

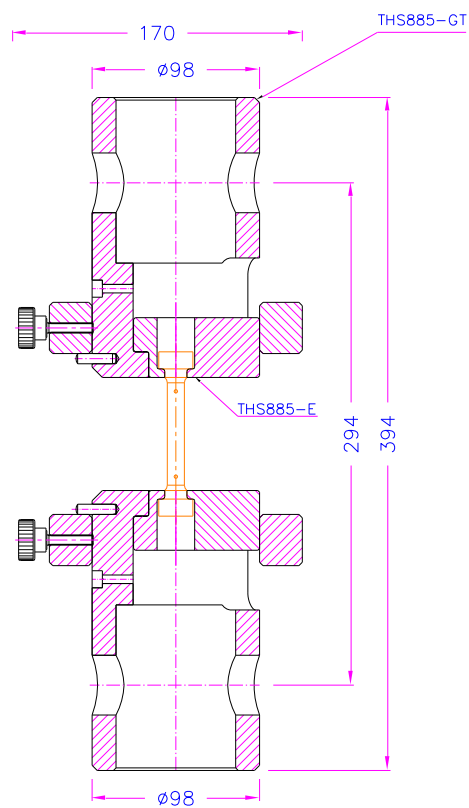
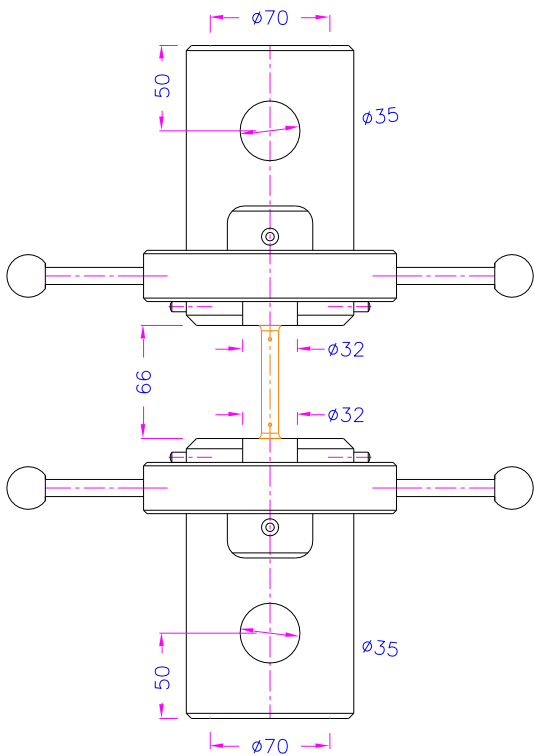
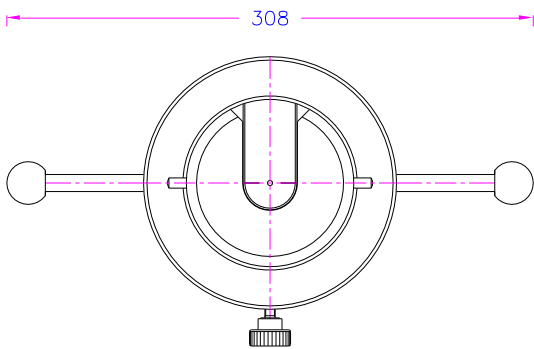
to test tensile properties of metallic materials according to GOST1497, GOST6996, DIN50125, ASTM-A370, GOST11150 with easily interchangeable inserts for testing button head samples, threaded samples, and screw head samples.

THS885-GT50... = carrier

THS885-E50... = insert

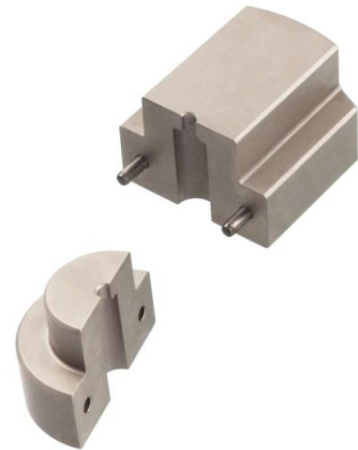
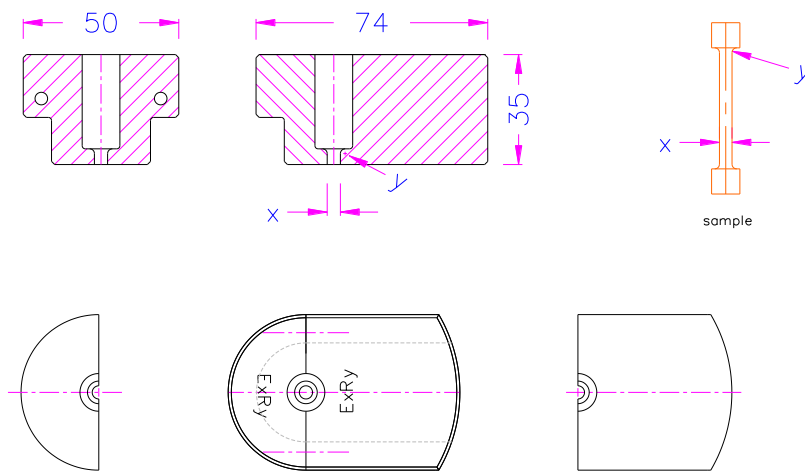
Carrier

Item no.:	THS885-GT50-Af7035
Max. load:	250 kN
Coupling:	Af70/35. Further couplings on request.
Body:	Steel, hardened, nickel-plated
Temperature range:	0 ... +70°C Further temperature ranges on request
Weight:	4.9 kg per carrier
Scope of supply:	1 carrier. Inserts must be ordered separately.



Inserts for button-head specimens:

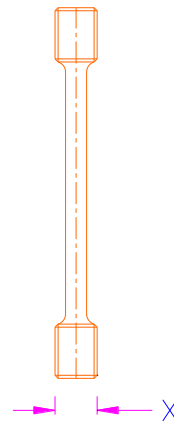
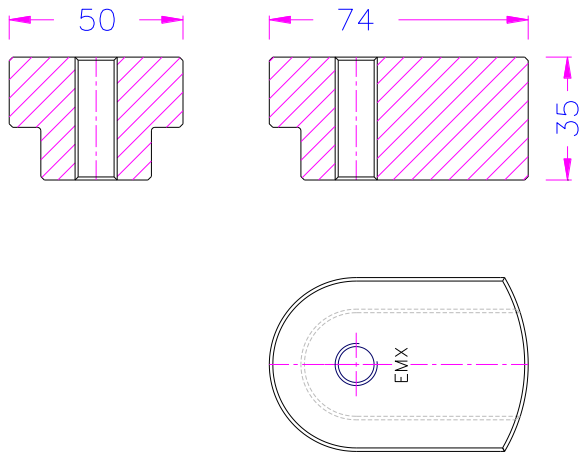
Item no.:	THS885-E50c-xRy
c = inserts are split into two parts x = diameter of sample, max. 10 mm Ø y = radius of fillet	
Material:	Steel, hardened, nickel-plated
Weight:	1.4 kg per pair
Temperature range:	0 ... +70°C Further temperature ranges on request



Examples for inserts:

THS885-E50c-xRy
THS885-E50c-3R1.5
THS885-E50c-4R1.5
THS885-E50c-5R1.5
THS885-E50c-6R1.5
THS885-E50c-8R2
THS885-E50c-10R3
THS885-E50c-14R3
THS885-E50c-7.6R1.6

Inserts for threaded-end specimens:	
Item no.:	THS885-E50-Mx
x = thread size	
Material:	Steel, hardened, nickel-plated
Weight:	1.46 kg per pair
Temperature range:	0 ... +70°C Further temperature ranges on request

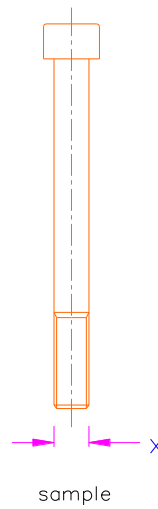
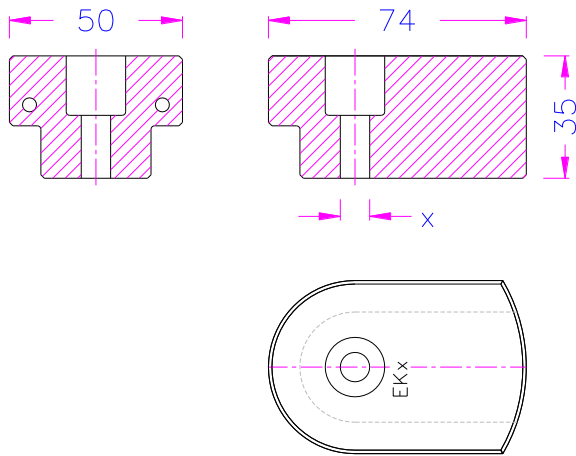


sample

Examples for inserts:

THS885-E50-Mx
THS885-E50-M5
THS885-E50-M6
THS885-E50-M8
THS885-E50-M12
THS885-E50-M14
THS885-E50-M18
THS885-E50-M20
THS885-E50-M22x1.5
THS885-E50-M22

Inserts for screw-head specimens:	
Item no.:	THS885-E50c-Kx
c = inserts are split into two parts x = diameter of the screw	
Material:	Steel, hardened, nickel-plated
Weight:	1.42 kg per pair
Temperature range:	0 ... +70°C Further temperature ranges on request



Examples for inserts:

THS885-E50c-K6
THS885-E50c-K8
THS885-E50c-K12
THS885-E50c-K14
THS885-E50c-K18
THS885-E50c-K20
THS885-E50c-K22

Examples for customized modifications:



THS885-GT50-Af7035 + THS885-E50c-10R3+15R3+20R5 + THS1596-KA-M35x2-F250 -GOST1497

250 kN version for tensile tests on metals according to **GOST1497**
with additional adapter to connect THS885-70 to wedge grips without dismounting



THS885-E50c-3R1.3-H51W8



THS885-GT50-Af7035 + THS885-E50c-xRy-H51W8